



MAPPING THE CULTURAL SECTOR

IN PENNINE LANCASHIRE

Appendices

By

Jura Consultants

Commissioned by

Pennine Lancashire Living Places
Partnership

JANUARY 2008



JURA CONSULTANTS
ECONOMIC & FINANCIAL ANALYSIS

JURA CONSULTANTS
7 STRAITON VIEW
STRAITON BUSINESS PARK
LOANHEAD
MIDLOTHIAN
EDINBURGH
EH20 9QZ
TEL. 0131 440 6750
FAX. 0131 440 6751

Admin@jura-consultants.co.uk

www.jura-consultants.co.uk

CONTENTS

APPENDIX

- A** Documentation Review
- B** Domain Specific Organisational Structures
- C** List of Consultees
- D** Analysis Of Sport England Active People Data To Illustrate Potential Demand For Sport
- E** Asset Dataset
- F** Primary Research Questionnaire
- G** Full Primary Research Findings

APPENDIX A
DOCUMENTATION REVIEW

Facilities or Services					
Area	Report Title	Organisation	Aims of the Strategy	Objectives	Enhancement / Development
Burnley	An Arts Strategy for Burnley 2005-08	Burnley Borough Council	Draw together the efforts and resources of all sectors so that the arts can contribute effectively to the goals of the community plan	<ol style="list-style-type: none"> 1. Ensure partnership working to provide maximum support and development of the arts 2. To celebrate diverse community and promote community cohesion through the arts 3. Contribute to the regeneration and economic development of the area supporting a positive image of the borough 4. Contribute to the development of a prosperous Burnley with a high quality of life and opportunities, particularly for young people 5. Employ arts to help develop a sustainable Burnley: healthy, safe, clean, green, well-housed 	<p>Extend Reach Festival</p> <p>Programme of town centre entertainment of diverse nature</p> <p>Increased access to arts projects, led by communities and their needs</p> <p>Mechanics Theatre to extend its audience</p> <p>Increase number of uses by non-traditional users</p> <p>Community art delivery linked with key regeneration areas</p> <p>Public art commissioned for new health and leisure centre</p>
Burnley	Sport and Physical Activity Strategy for the Borough of Burnley	Burnley Borough Council	Aims to become a Borough where individuals and communities of all ages and backgrounds can become involved and stay involved in sport and physical activity for both fun and for improving health and well-being	<ol style="list-style-type: none"> 1. Achieving community cohesion 2. Promoting healthy communities (increase level of activity) 3. Sports development (wider access to sport) 4. Young people (ensuring they get and stay involved in sport) 5. Supporting club and facility provision 	<p>Build on and develop high profile events e.g. Balloon Festival, Blues Festival, MELA, etc</p> <p>Create dynamic balance between old and new</p> <p>Develop walking the way to health project</p> <p>More emphasis on outreach and public art</p>

Facilities or Services					
Area	Report Title	Organisation	Aims of the Strategy	Objectives	Enhancement / Development
Burnley	Cultural Strategy for the Borough of Burnley	Burnley Borough Council	Key issues:achieve community cohesion, common prosperity, cross-cultural understanding	<p>Support cultural activity which:</p> <ul style="list-style-type: none"> • develops and promotes the profile of Burnley in positive ways • contributes to the achievement of wider aims, including increasing community safety, health promotion and overcoming social exclusion • boosts the wider economy • achieves community cohesion • Widens access to cultural activity and opportunity <p>Needs, ambitions and potential of young people should be central to all developments and changes in cultural sector</p> <p>Cultural activity for education in the broadest sense</p>	
Burnley	Burnley Visitor Economy Strategy	Burnley Tourism Group	By 2016 Burnley will be known as a friendly, cultured and dynamic Pennine Lancashire town with a diverse and high quality tourism offer for all, making a significant contribution to the local economy	<p>Establish a strong brand name</p> <p>Improve quality</p> <p>Develop partnerships</p> <p>Develop Target markets</p> <p>Information and Communication Technology</p>	<p>Develop outdoor activities</p> <p>Develop business tourism facilities</p>

Facilities or Services					
Area	Report Title	Organisation	Aims of the Strategy	Objectives	Enhancement / Development
Blackburn with Darwen	Blackburn with Darwen's Cultural Strategy	Blackburn with Darwen Borough Council	To help celebrate culture in the borough and to ensure that the level and range of cultural activity is developed to meet the aspirations of the people	The following are identified: Actions designed to build a stronger cultural community Actions designed to develop a cultural environment Actions designed to develop cultural awareness	Investigate the establishment of Northern Home Design Centre as a cluster of creative industries Develop 5 year plan for events infrastructure Develop investment strategy for cultural buildings
Burnley	Burnley's Future 2007-2017 - The Sustainable Community Strategy	Burnley Action Partnership	The strategy highlights the commitments of partners across sectors to work together for the long-term prosperity of Burnley. Focus will be on prosperity, places and people.	To achieve a Burnley to be proud of. A place with a diverse and united community, a modern economy, a healthy, safe and clean environment and quality services which work together to the good of the public.	Establishment of Creative Partnerships East Lancashire to raise school attainment through creative learning. Annual community festival Weavers' triangle area Feasibility study of the "Fashion Tower" concept Restoration of Towneley Park
Rossendale	Rossendale Alive - Our Sustainable Community Strategy 2008 - 2018	The Rossendale Partnership	Vision: By 2018, Rossendale will have strong communities with an enhanced environment and heritage. It will be an attractive place to live where tourists visit and employers invest.	Overarching principals 1. Reducing inequalities 2. Community engagement and development 3. Community cohesion - promoting equality and valuing diversity	Rossendale will protect and enhance its natural and built heritage which will be recognised as an outstanding resource by visitors and residents Adrenaline Gateway - unique leisure and cultural experience through adrenaline sports.

Facilities or Services					
Area	Report Title	Organisation	Aims of the Strategy	Objectives	Enhancement / Development
Pendle	Pendle's Community Cohesion Action Plan 2007/08	Pendle Partnership	Vision: A community in which diversity is valued and the contribution of all is recognised and respected	<ul style="list-style-type: none"> >Promote changes in perception of different cultures >Celebrate diversity whilst creating opportunities to bring communities together through educational and cultural activities >Encourage faith communities to work together >Promote greater understanding 	
Pendle	Outdoor Recreation Strategy 2003-2008	Pendle Borough Council	To provide a vision for the development of outdoor sport in Pendle	<ul style="list-style-type: none"> >To promote role of sport and recreation in achieving wider objectives >To increase quality and quantity of outdoor recreation facilities >To ensure effective, efficient and economical management of facilities >To ensure new facilities are developed through forward planning >Provision to reflect local needs >To ensure facilities are accessible to local community 	
Rossendale	Tourism Marketing Action Plan for Rossendale (Nov 2005)	Rossendale LSP	To develop a compelling tourism marketing action plan for Rossendale, using tourism as a key economic driver	<ul style="list-style-type: none"> >Raise profile of Rossendale and borough as a visitor and business tourism destination >Increase visitor traffic to Rossendale >Increase awareness of Rossendale facilities and resources >Increase value of tourism in Rossendale 	
Pendle	Pendle's Sustainable Community Strategy 2008-18	Pendle Partnership	Sets framework, priorities, and objectives to improve life in Pendle	Aim to make Pendle a place where quality of life continues to improve, where people respect one another, where everyone aspires to reach their full potential, recognised locally and nationally as a great place to live, learn, work, play & visit.	

Facilities or Services					
Area	Report Title	Organisation	Aims of the Strategy	Objectives	Enhancement / Development
Lancashire and Blackpool	Destination Management Plan	Visit Lancashire and Blackpool	<ul style="list-style-type: none"> • Building and sustaining confident, committed and prosperous businesses • Investing in quality in every aspect of the visitor economy • Improving the image and raising the profile of the area. • Ensuring that people living and working in the sub-region appreciate and benefit from the contribution that the industry makes to the quality of life. • Ensuring the visitor economy is integrated with regeneration and economic development policies and strategies. 	<p>Three key areas</p> <ol style="list-style-type: none"> 1. Blackpool 21st Century 2. Preston City Vision 3. Pennine Lancs Transformational Agenda <p>By 2016</p> <ul style="list-style-type: none"> • Blackpool will be transformed into a world-class visitor destination and appeal to increasingly affluent and discerning visitors. • Lancashire will be established as a destination for mature and discerning visitors attracted by the traditional Lancashire welcome based on a high quality, friendly and personal service. These visitors will come throughout the year helping to achieve a seasonal spread of benefits • The main appeal of Lancashire will be its well-kept heritage towns, classic resorts and beautiful countryside, whose attractions are presented with flair and imagination that reinforces a strong sense of place and local identity. • Lancashire's countryside - one of the area's strongest assets - will have developed its potential through sensitive and sustainable development. • Blackpool will have a reputation as a quality association events destination and the whole area will have achieved a strengthened corporate business offer. • The visitor economy will be making a significant contribution to the sub-regional economy, the environment and the image of Lancashire and Blackpool as a quality place to live, work and visit. 	<p>Development will respect the needs of visitors, the natural landscape, the local community and the built environment.</p> <p>Activities will be located and managed appropriately and be to a scale that does not exceed the capacity of the associated environment and its communities.</p> <p>Blackpool - Attack BrandFive Themes:</p> <ol style="list-style-type: none"> 1. Country Escapes 2. Family Fun 3. Coastal Contrasts 4. Living Legends 5. Night-time buzz <p>Taste Lancashire Key Sectors Business Tourism Group Travel Events and Festivals Day Visits Overseas markets</p>
SECTOR SPECIFIC	STRATEGY				

Facilities or Services					
Area	Report Title	Organisation	Aims of the Strategy	Objectives	Enhancement / Development
Lancashire	Lancashire Sport Changing Lives	Lancashire Sport Partnership	<p>Promote and support participation in sport and physical activity, particularly with young people, to start, stay and succeed in sport</p> <p>Vision:</p> <p>To build a participation culture in Lancashire</p> <p>Aim: Increase participation in and widen access to sport and physical activity</p>	<p>Core Themes:</p> <ol style="list-style-type: none"> 1. Young People Key priority audience, and engaging people when young should lead to increased chances of lifetime involvement Increase levels of movement / physical literacy and participation in sport among young people 2. Health and Well-being Increase the take-up of sport and physical activity among people in Lancashire focusing on areas with greatest health needs and inequalities 3. Enhancing the sporting infrastructure Develop a professionally operated high quality network of facilities, environments, pathways that will optimise opportunities to start, stay and succeed in sport. 4. Developing the Workforce 5. Benefiting the Economy Use sport to support the development of the economy 6. Creating Safer and Stronger Communities Use sport and physical activity to unlock skills, and help people at risk to develop positive lifestyles 	<p>Developing a comprehensive cross boundary facilities planning process</p> <p>Facility planning strategy developed</p> <p>Increase number of coaches from all backgrounds, BME, gender, disabled people etc</p> <p>Improved access to enhanced coaches</p> <p>Run programme of orientated courses targeted at particular groups</p> <p>Leisure card for all looked after children to provide prioritised access to services</p> <p>Capture data related to a series of participation and provision indicators</p>
Lancashire	Core Team Delivery Plan - Sporting Infrastructure	Lancashire Sport	<p>Working in partnership to increase sustainable participation in, and widen access to, sport and physical activity."To establish a sustainable Sporting infrastructure and partnership</p>		

APPENDIX B

DOMAIN SPECIFIC ORGANISATIONAL INFRASTRUCTURE

B.0 Domain Specific Organisational Structures

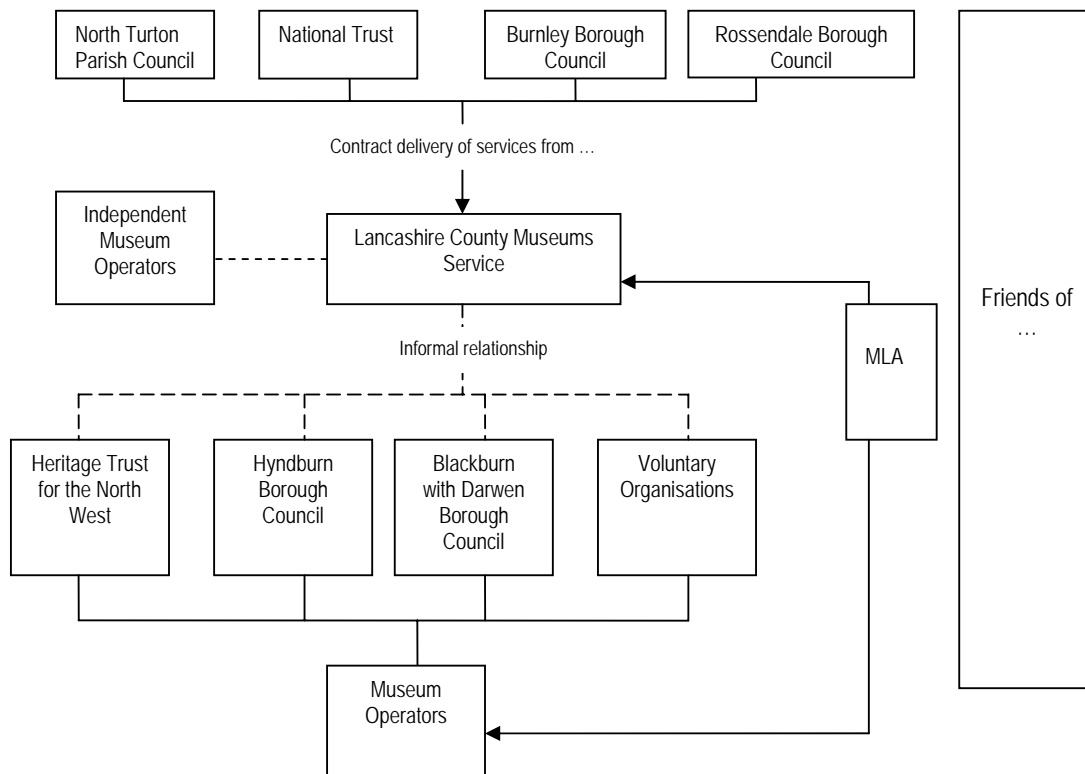
Presenting the strategic context for the cultural sector in Pennine Lancashire on one organogram is challenging due to the number of organisations involved in the cultural sector and the fact that organisations have different relationships in different domains of the cultural sector (i.e. museums, arts, sports etc). Therefore, we have prepared indicative organograms for each domain, which illustrate the relationship between organisations. Organograms are provided for the following domains:

- Museums
- Libraries
- Archives
- Sports
- Arts
- Built Environment

A short summary follows each organogram to explain the structure and operational issues.

B.1 Museums

The following diagram illustrates the relationships between organisations involved in the delivery of museum services across Pennine Lancashire.



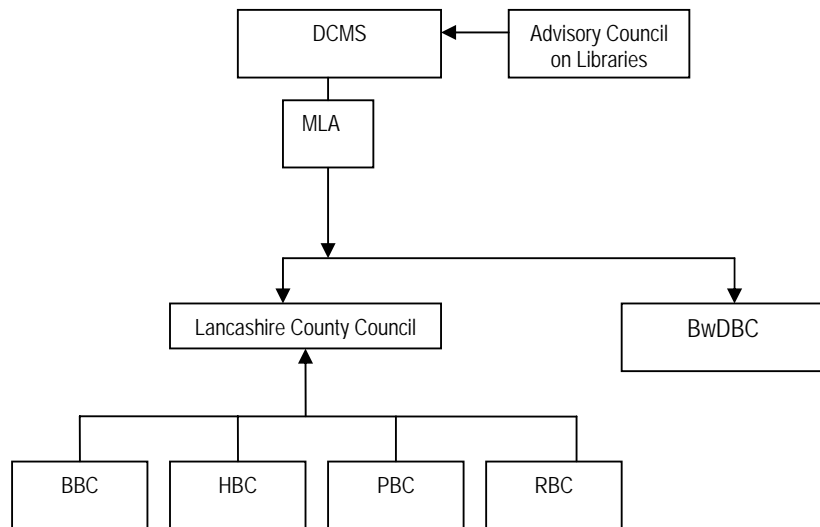
The museum sector in Pennine Lancashire and indeed across Lancashire is complex with organisations such as Blackburn with Darwen Borough Council owning and managing services, whilst others sub-contract the management of services to Lancashire County Council. The diagram above illustrates the relationship and places the LCC Museum Service (LCCMS) at the centre of the diagram. In most instances, the LCCMS plays either a formal role, i.e. through service level agreements with owners of museums (i.e. the organisations above the broken line), or an informal, supporting role with those organisations below the line. The supporting role varies from advice and guidance to very informal, irregular contact on the basis that they operate in the same sector.

The Museums Libraries and Archives Council is shown to the right hand side of the diagram and it links directly into LCC and all other registered museums. The MLA sets strategic direction and awards accredited status to museums in England. It is therefore a key agency and stakeholder in the diagram.

Underpinning and supporting activity within the museum sector are a number of 'Friends of ...' organisations. These organisations are often formally constituted as charities and provide fundraising and operational support to museums. They are shown in the diagram to reflect the fact that they potentially cover the whole of the museum sector.

B.2 Libraries

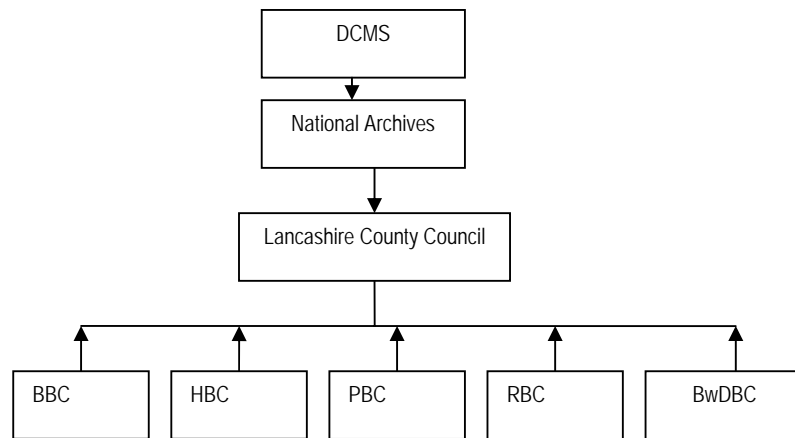
All local authorities, with the exception of BwD, sub-contract the delivery of library services to Lancashire County Council Library and Information Service. As above, the Library Services operate to a strategic agenda set by DCMS and the MLA. This relationship is illustrated below.



DCMS sets national strategy for library provision through working closely with the MLA and the Advisory Council on Libraries, an independent panel which provides advice to DCMS Ministers. Strategy is set by DCMS and MLA which is then implemented by local authorities across the country. In Pennine Lancashire, the vast majority of services are provided by LCC under a service level agreement. BwDBC provides its own library services from 4 fixed and one mobile service.

B.3 Archives

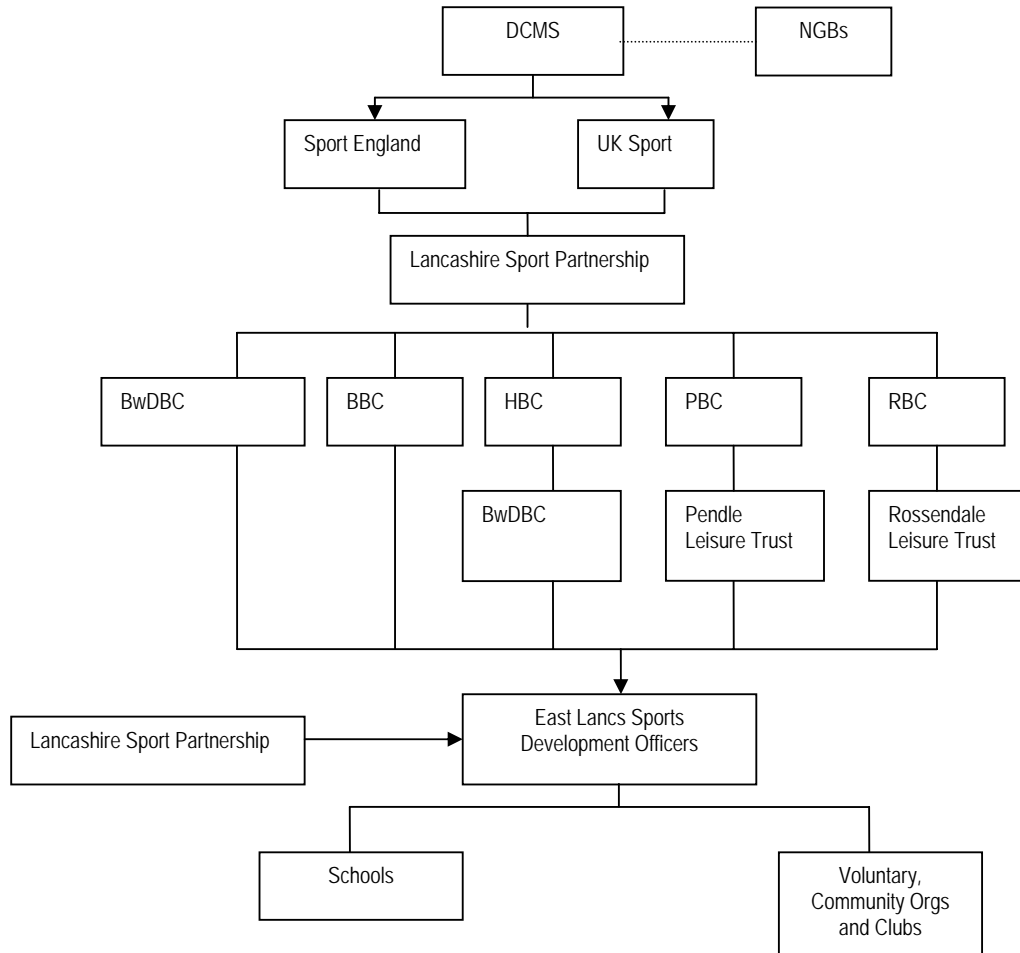
The following diagram illustrates the relationship between key agencies with respect to archival material.



The National Archives is at the heart of information policy - setting standards and supporting innovation in information and records management across the UK, and providing a practical framework of best practice for opening up and encouraging the re-use of public sector information. Archive Services therefore work within the context of National Archives Policy which in turn is informed by DCMS priorities. In Pennine Lancashire, all local authorities subcontract Lancashire County Council to maintain and make accessible archival material from the Lancashire Record Office in Preston.

B.4 Sports

The following chart summarises the organisational structure within the sports domain across Pennine Lancashire

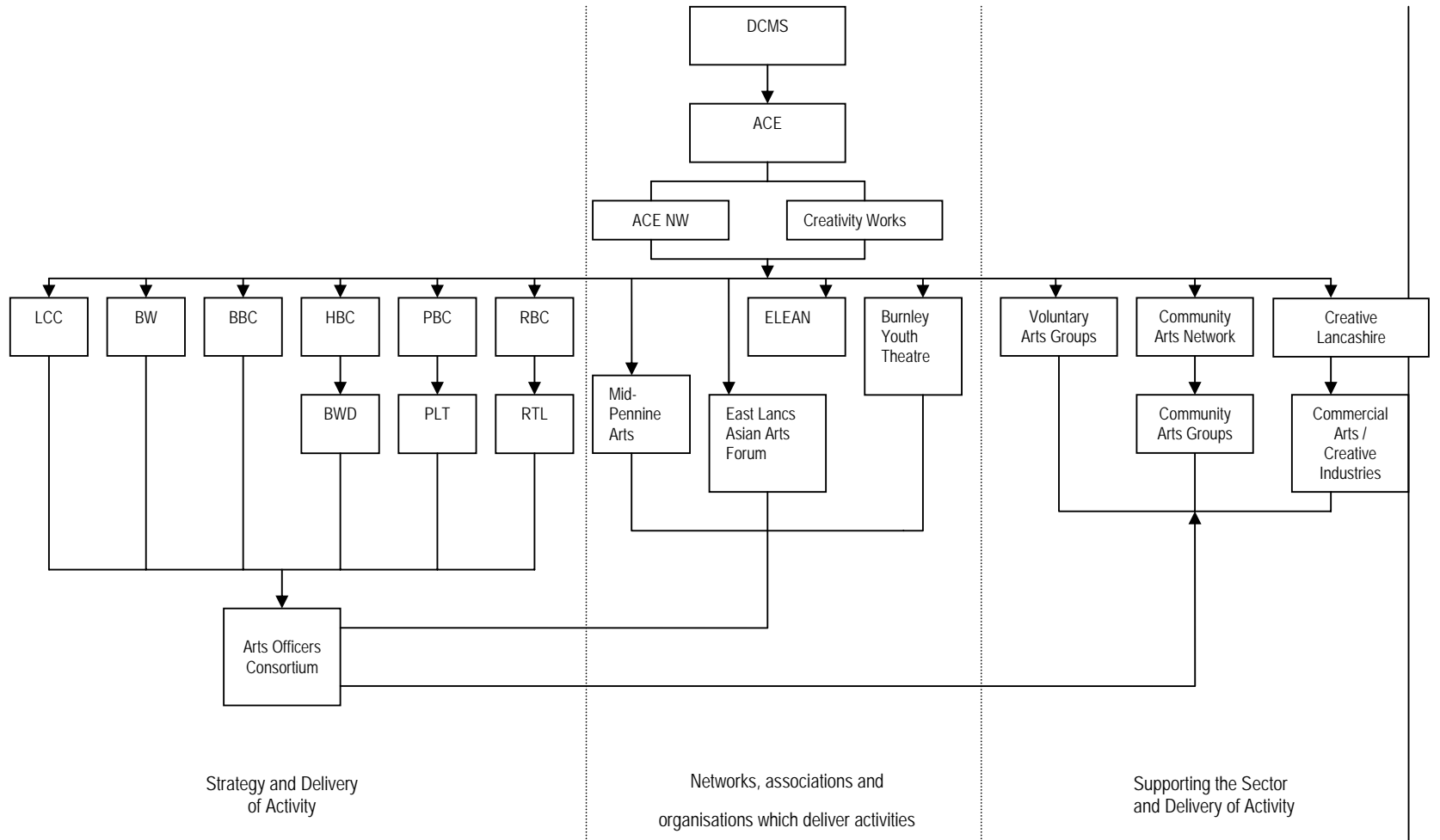


DCMS sets national strategy with respect to promoting and increasing participation in sport. DCMS funds Sport England to promote and invest in grassroots and community sport and it works with UK Sport in working towards world class success. Lancashire Sport Partnership is one of 49 sub-regional sport partnerships operating across England. As a County Sport Partnership (CSP) they are funded by Sport England, agencies to deliver specific projects on their behalf, local government and private sponsorship. County Sports Partnerships are an integral part of the Government's drive to develop a 'single sports delivery system' across England, and are the key bridge between local and regional networks. Lancashire Sport Partnership supports local authorities and in particular local authority sport development officers to improve sporting opportunities. In terms of Pennine Lancashire sports provision, both Pendle and Rossendale have Leisure Trusts which provide both sporting and artistic programmes. Hyndburn has recently sub-contracted BwDBC to deliver sports activities on its behalf, whilst BwDBC and BBC provide sports activities and facilities directly.

An East Lancashire wide network of Sports Development Officers has been established and this network is supported by Lancashire Sport Partnership. Sports Development Officers engage with structured providers of sporting activities such as schools, community and voluntary groups, but also the general public through programmes designed to encourage broader interest and participation in sport and physical activity.

B.5 Arts

The following chart illustrates the organisational relationships between agencies working in the arts domain.



The diagram above splits the art domain into three sections. From left to right these are:

1. Organisations which set strategy and deliver activities
2. Networks and associations and organisations which deliver activities
3. Organisations which support the sector and deliver activities

As in all instances, DCMS set the strategy and priorities for entitlement to and engagement in the arts. This strategy is then implemented by Arts Council England and at a regional level, Arts Council England North West. Creativity Works is positioned alongside ACE NW as it provides a range of services (advice, courses etc), which are available to the variety of organisations which sit below it in the diagram. The following considers each section of the diagram in turn.

Organisations which set strategy and deliver activities

Similar to the sports structure identified above, Pendle and Rossendale sub-contract the delivery of arts activities to leisure trusts, whilst Hyndburn Borough Council contract BwDBC to deliver arts activities. LCC provides an arts development advisory role and is involved in the arts development officers consortium which is currently being established.

Networks, associations and organisations which deliver activities

The central strand of the diagram relates to networks and associations, but also includes organisations which deliver services (e.g. Mid-Pennine Arts and Burnley Youth Theatre). MPA is funded by LCC, BBC, ACE, PBC and RBC (and Todmorden Council) and delivers a range of activities across Pennine Lancashire. In this strand there is also a range of organisations which are forums, networks etc. These link directly to ACE either through funding arrangements or through the pursuit of particular audiences.

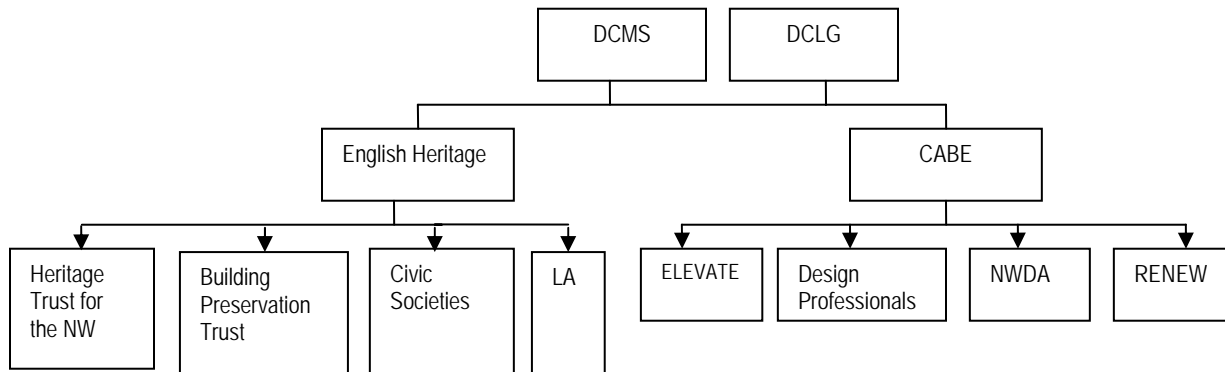
Organisations which support the sector and deliver activities

The final strand of the structure are organisations which support the sector and / or deliver services. This section includes voluntary and community arts groups which provide direct opportunities to engage with artistic activity, but also organisations which support the sector, or particular elements of it. For instance Creative Lancashire is shown to support commercial artistic activity, or the creative industries, and Community Arts Network supports community arts organisations.

A key element of this structure is the Arts Development Officers Consortium. This group has the opportunity to engage with all parts of the sector, and can work to identify needs, address gaps and encourage enhancement of the artistic cultural offer. The importance of this linkage is presented in the chart above.

B.6 Built Environment

The following diagram illustrates the relationship between key agencies with an interest in the built environment in Pennine Lancashire.



English Heritage and CABA are considered to be the two key agencies in the sector which deliver against DCMS and DCLG priorities. English Heritage has a clear interest in the historic environment whilst CABA has an interest in design quality of existing and proposed developments. English Heritage will engage with owners and managers of listed buildings and scheduled sites in terms of their maintenance and in relation to any projects. EH will engage with Local Authority conservation officers regularly in connection with maintenance issues.

CABA works directly with a number of key agencies in Pennine Lancashire and across the north west. It is currently engaged as an advisor to ELEVATE, NWDA and RENEW and will work directly with professional design teams and developers as appropriate.

APPENDIX C

LIST OF CONSULTEES

**TABLE C.1
LIST OF CONSULTEES**

Lancashire County	Position	Name
	Head of Cultural Services	David Lightfoot
	Executive Director of Adult and Community Services	Richard Jones
	Lancashire Museums	Edmund Southworth
	Arts Development Officer	Elaine Roberts
	Record Office Manager	Bruce Jackson
Blackburn with Darwen		
	Director Regeneration, Housing and Neighbourhoods	Adam Scott
	Director of Culture, Leisure and Sport	Steve Rigby
	Head of Arts	Rebecca Johnson
Burnley		
	Director of Community Services	Mick Cartledge
	Head of Community Cohesion	Mike Waite
	Theatre and Arts Manager	Kirk Worley
	Curator, Towneley Hall	Susan Bourne
	Strategic Arts Development Officer	Helen Knowles
	Snr Planning and Conservation Officer	Erika Eden Porter
Rossendale		
	Head of Regeneration	Steve Jackson
Pendle		
	Conservation Officer	Rosemary Lyons
Leisure Trust	Chief Executive	Phil Storey
Hyndburn		
	Head of Regeneration and Housing	Mark Hoyle
	Head of Hyndburn Leisure Trust	Peter Baron
CABE	Design and Heritage Pennine Lancashire	Darren Ratcliffe
ELEVATE	Communications Director	Kathleen Houghton
ELEVATE	Creative Community Engagement Manager	Claire Tymon
Heritage Lottery Fund	Regional Director	Sara Hilton
Culture North West	Heritage Tourism Executive	Andrew Backhouse
MLA	Senior Policy Advisor: Communities and Local Government	Paul Bristow
CABE	CABE Researcher	Tom Bolton
Lancashire Sport	Communications Manager	James Ventham
NWDA	Director of Tourism	James Berresford
Places Matter!	Programme Manager	Annie Atkins

APPENDIX D

ANALYSIS OF SPORT ENGLAND ACTIVE PEOPLE DATA TO ILLUSTRATE POTENTIAL DEMAND FOR SPORT

D.0 POTENTIAL SPORTS DEMAND

BURNLEY		
		Total Potential Demand (Persons)
1	Swimming	30,702
2	Walking	23,418
3	Football	23,080
4	Gym	18,993
5	Cricket	17,565
6	Fishing	16,270
7	Utility Walking	15,455
8	Dance Exercise	14,978
9	Golf	14,908
10	Aqua-aerobics	14,636
11	Aerobics	14,433
12	Bowls	13,819
13	Snooker	13,343
14	Ice Skating	13,072
15	Badminton	12,799

BLACKBURN AND DARWEN		
		Total Potential Demand (Persons)
1	Swimming	46,043
2	Football	35,562
3	Walking	31,037
4	Gym	27,852
5	Cricket	27,340
6	Utility Walking	27,031
7	Fishing	26,208
8	Aerobics	24,770
9	Dance Exercise	22,714
10	Snooker	22,508
11	Ice Skating	21,070
12t	Darts	20,864
12t	Pool	20,864
13	Golf	20,863
14t	Boxing	19,631
14t	Weight Training	19,631
15	Aqua-aerobics	19,218

PENDLE		
		Total Potential Demand (Persons)
1	Swimming	31,164
2	Walking	24,132
3	Gym	19,443
4	Fishing	17,995
5	Football	16,485
6	Golf	16,340
7	Utility Walking	15,651
8	Bowls	15,169
9	Dance Exercise	15,030
10	Snooker	14,892
11	Aqua-aerobics	14,479
12	Aerobics	14,272
13t	Ice Skating	13,238
13t	Darts	13,238
13t	Pool	13,238
14	Badminton	12,065
15	Cricket	11,383

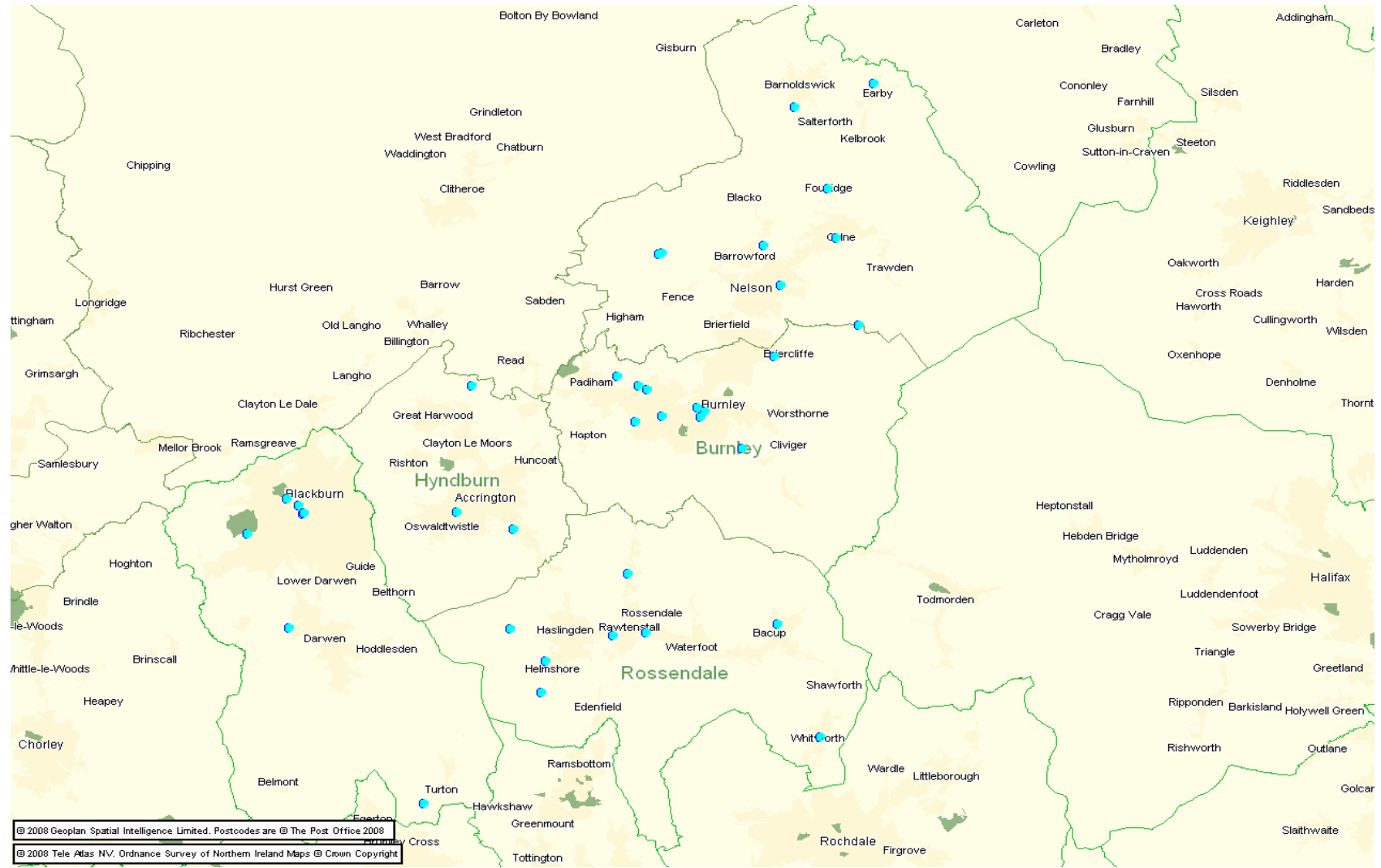
HYNDBURN		
		Total Potential Demand (Persons)
1	Swimming	28,667
2	Football	22,129
3	Walking	20,808
4	Gym	18,797
5	Cricket	17,225
6	Dance Exercise	14,837
7	Fishing	14,710
8	Golf	14,395
9	Utility Walking	14,335
10	Aqua-aerobics	13,768
11	Aerobics	13,706
12	Ice Skating	13,266
13	Badminton	12,259
14	Bowls	11,944
15	Snooker	11,755

ROSSENDALE		
		Total Potential Demand
1	Swimming	22,583
2	Football	17,539
3	Walking	17,231
4	Gym	16,875
5	Cricket	14,786
6	Golf	14,173
7	Aqua-aerobics	12,286
8	Fishing	11,572
9	Cycling	10,758
10t	Dance Exercise	10,400
10t	Bowls	10,400
11	Aerobics	9,890
12	Badminton	9,687
13	Utility Walking	9,584
14	Tennis	9,074
15	Snooker	8,717

APPENDIX E

ASSET DATASET

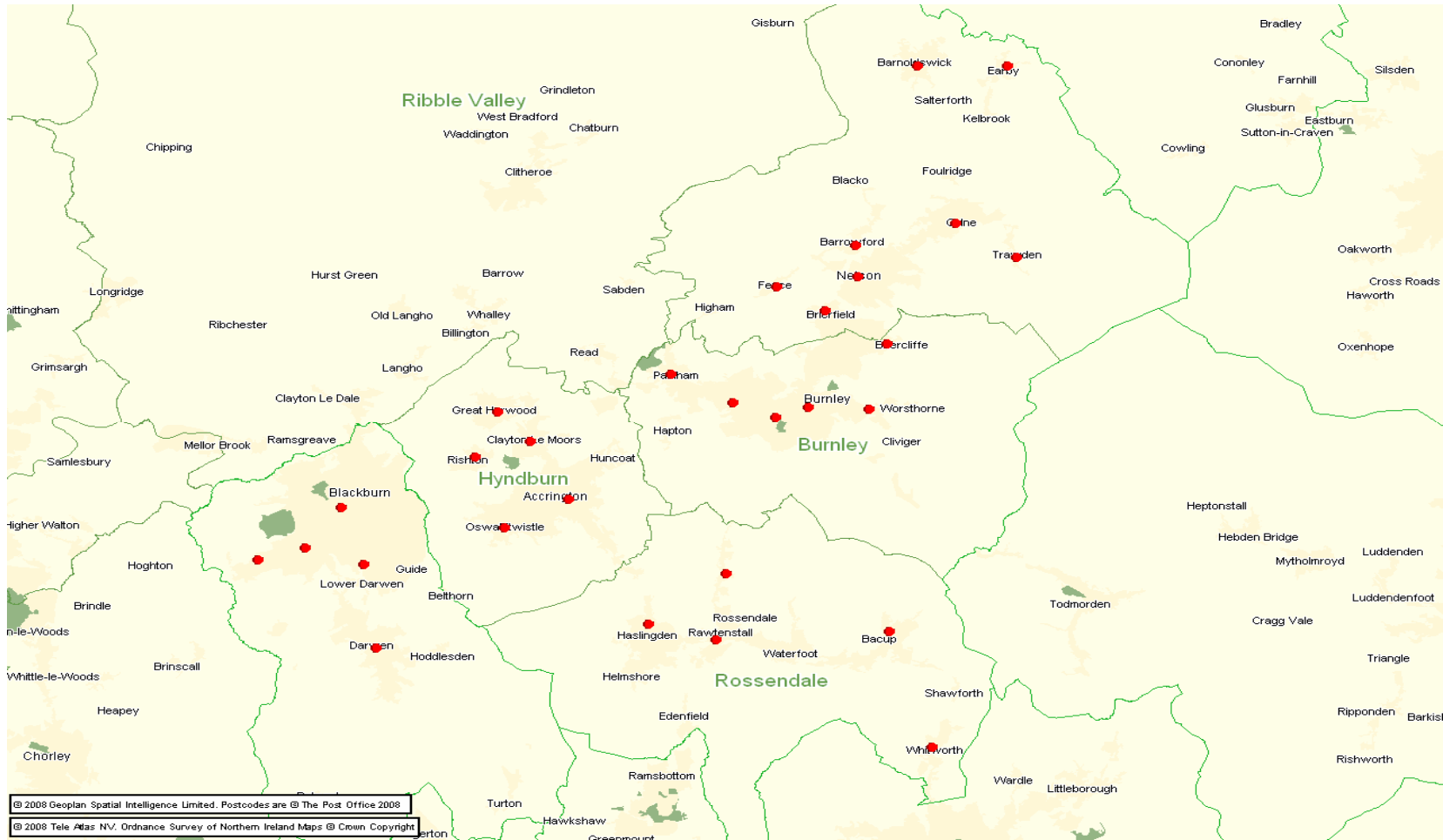
MUSEUMS, HERITAGE CENTRES AND VISITOR ATTRACTIONS



MUSEUMS, HERITAGE CENTRES AND VISITOR ATTRACTIONS

BLACKBURN WITH DARWEN	BURNLEY
Blackburn Museum and Art Gallery	Towneley Hall Art Gallery and Museum
Sunnyhurst Wood and Visitor Centre	Gawthorpe Hall
Witton Country Park	Mid Pennine Gallery
Blackburn Cathedral	Queen Street Mill
Darwen Tower	Weavers Triangle
Colourfield Panopticon	Keighley Bus Museum Trust
HYNDBURN	Moorhouses Brewery Tour
Haworth Art Gallery	Howarth Gallery
Oswaldtwistle Mills	Rourke's Forge
Martholme	Offshoots Permaculture Centre
PENDLE	Pendle Witch Experience
Pendle Heritage Centre	ROSSENDALE
Witches Galore	Rosendale Museum
St. Marys Church	Helmshore Mills Textile Museum
Pendle Arts Gallery	Whitworth Heritage Museum
The Yorkshire Dales Mining Museum	Weavers' Cottage
Bancroft Mill	Halo Panopticon
Coldwell Activity Centre	Clough Head Visitor Centre and Café
Colne Heritage Centre	Crawshawbooth Quaker Friends Meeting House
Foulridge Canal Cruises	Cronkshaw Fold Farm
British in India Museum	East Lancashire Railway
Thornton Hall Farm Country Park	Bacup Natural History Society

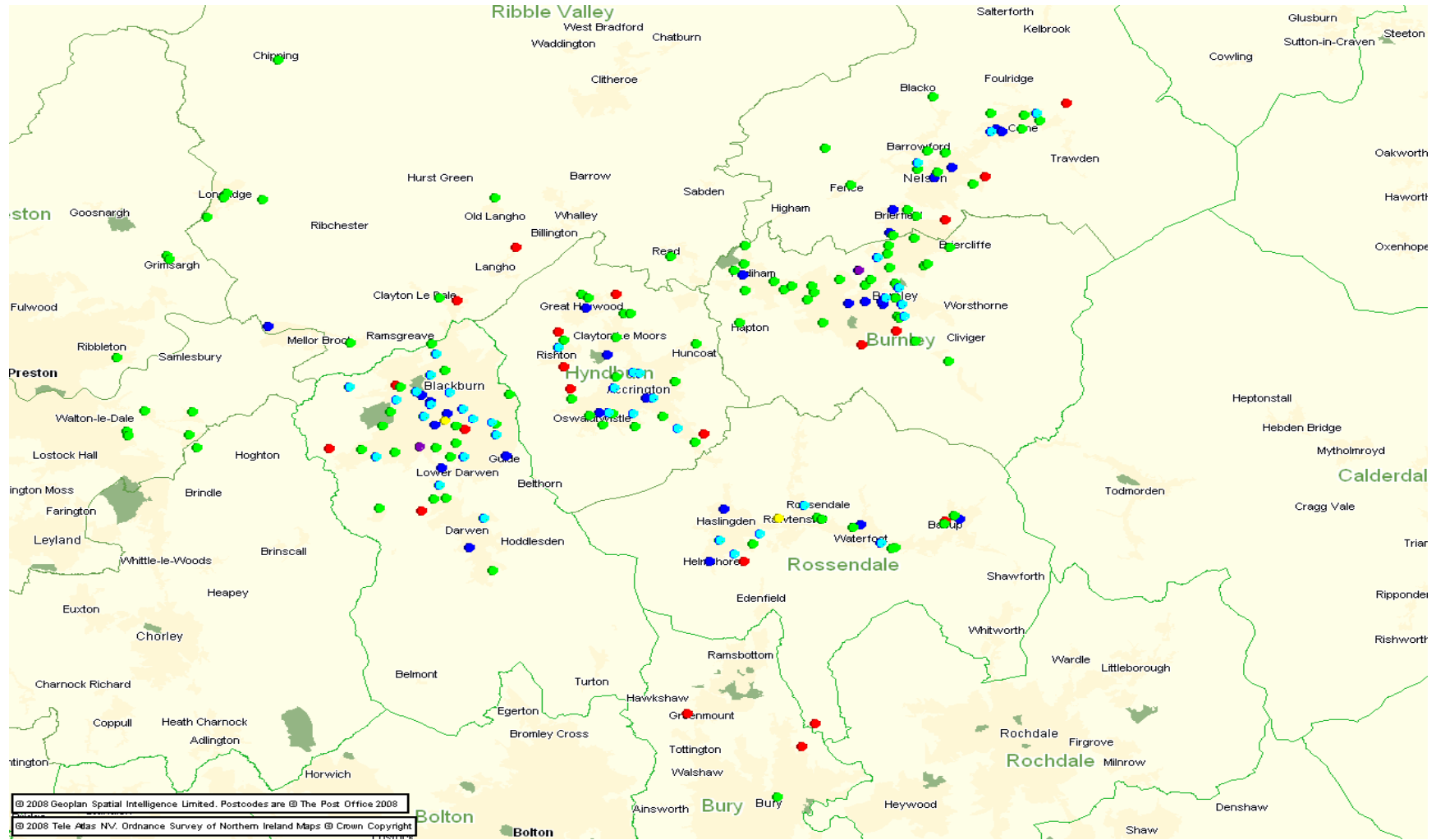
LIBRARIES



LIBRARIES

BLACKBURN WITH DARWEN	ROSSENDALE
Blackburn Central Library	Bacup Library
Mill Hill Library	Crawshawbooth Library
Darwen Library	Haslingden Library
Livesey Library	Rawtenstall Library
Roman Road Neighbourhood Learning Centre and Library	Trailer Library (mobile)
Mobile Library (not mapped)	Waterfoot Library (no longer in use)
HYNDBURN	Whitworth Library
Accrington Library	BURNLEY
Clayton-Le-Moors Library	Burnley Library
Great Harwood Library	Briercliffe Library
Oswaldtwistle Library	Coal Clough Library
Rishton Library	Padigham Library
Mobile Library	Pike Hill Library
PENDLE	Rosegrove Library
Barnoldswick Library	Burnley Campus Library
Barrowford Library	
Brierfield Library	
Colne Library	
Earby Library	
Nelson Library	
Trawden Library	
Wheatley Lane Library	
National Library for the Blind	

SPORTS FACILITIES



- Golf
- Athletics Tracks and Grass Pitches
- Health and Fitness Suite
- Ski Slope and Ice Rinks
- Indoor Tennis and Indoor Bowls
- Sports Hall

SPORTS FACILITIES

GOLF
Accrington And District Golf Club
Rishton Golf Club Ltd
Baxenden And District Golf Club
Green Haworth Golf Club
Great Harwood Golf Club
Lee Valley Golf Driving Range
Whalley Golf Club
Mytton Fold Golf Club
Blackburn Golf Centre And Driving Range
Wilpshire Golf Club
Burnley Golf Club
Rossendale Golf Club Ltd
Blackburn Golf Club
Towneley Park Golf Course
Clitheroe Golf Club
Darwen Golf Club
Stonyhurst Park Golf Club
Pleasington Golf Club
Nelson Golf Club
Bacup Golf Club Ltd
Sambury Golf Centre
Marsden Park Public Golf Course
Greenmount Golf Club
Turton Golf Club
Longridge Golf Club
Highfield Golf Course
Dunscar Golf Club
Walmsley Golf Club
Loves Park Golf Club
Lobden Golf Club
Harwood Golf Club
Bolton Open Golf Complex
Fishwick Hall Golf Club
Colne Golf Club
Todmorden Golf Club
Rochdale Golf Club
Brightmet Golf Club
Shaw Hill Hotel Golf & Country Club
Bolton Old Links Golf Club
Marland Golf Course

ATHLETICS TRACKS AND GRASS PITCHES	
Wilson Playing Fields Track	Higham Recreation Ground
Marl Pits Track	Cherryfold Playing Field
Witton Park Athletics Track	Hawthorns C Junior
Barden Lane Athletics Track	Lockyer Avenue Playing Field
Witton Park Athletics Track	Manchester & District Referees Society
Seedhill Athletics & Fitness Centre	St Mary & St Joseph Rcp Aided
Market Street Athletics Track	Blacksnape Playing Fields
Springfield Park Track	Everton Playing Fields
Moorhead Sports College	Oakhill Academy
Highams Playing Field	Northcote Lane
Accrington Peel Park Primary School	Whalley Cricket Club
St Nicholas Church Of England Primary School	St Mary's College
Clayton-Le-Moors All Saints Ce Primary School	Queen Elizabeth Ii Playing Fields Charitable
Bullough Park Playing Fields	Haslingden Sports Centre
Accrington Huncoat Primary School	Pleckgate High School
St Marys Roman Catholic Primary School	Pleckgate Playing Fields
Wilson's Playing Field	Sabden
Accrington St Peters Ce Primary School	Blackburn Northern Cricket Club
Foxhill Bank Playing Fields (White Ash	Blackburn Rugby Union Football Club
Oswaldtwistle St Andrews Ce Primary	Calderstones
Oswaldtwistle Hippings Methodist Voluntary Control	St Mary Magdalenes Rc Convent School
Church And Oswaldtwistle Cricket Club	Alder Grange Community And Technology School
Norden Valley	Salesbury Cricket Club
Norden Sports Centre	Our Lady Of Perpetual Succour Rcp Aided
Baxenden Cricket Club	Roman Road Community Pitch
Great Harwood Primary School	St Wilfrids Community Leisure Centre
Hapton Recreation Ground	Queen Elizabeth's Grammar School
Memorial Park Playing Field	Haslingden Cricket Club
Memorial Playing Fields	East Lancashire Cricket Club
Reed Cricket Club	Stoneyholme Recreation Ground
Fennyfold Playing Fields	Darwen Cricket Club (2nd Site)
Intack Cp	Darwen Moorland High School
The Arbories Memorial Sports Ground	Worswick Memorial Cricket Ground
Padiham St Leonards Ce School	Marlpits Sports Centre
Gawthorpe School Sports Hall (Closed	Burnley Calder View School
Crosshill Special School	Anchor Ground (Darwen Fc)
Habergham High School	Blackburn Rovers Training Ground
Blakewater College	Brock Hall Training Ground
Shuttleworth College	Darwen Vale Community Leisure Centre
Burnley Habergham High School	Townley Playing Pitches
West Ground End	Turf Moor Playing Field
Sycamore Avenue	Witton Park High School
Barden Lane Athletics Track	Lower Towneley Playing Fields
Queens Park	Darwen Cricket Club
Disraeli Street	Higher Towneley

ATHLETICS TRACKS AND GRASS PITCHES	
St Peters Playing Field	Meadowhead C Junior
Prairie Fields	Ripon Hall Avenue Recreation Land
St Bede's Roman Catholic High	Waddington Playing Field
St Barnabas Cep Aided	Swindon Playing Field
Burnley Rfc	Woodhey High School
Cherry Tree Cricket Club	Woodhey High School Sports Hall
Westholme School	Ringstone Crescent
St Marys Ce	Ringstone Crescent Recreation Ground
Pendle Forest Sports Ground	Chatburn Ce
Sir John Thursby Community College	Chatburn Cricket Club
Edenfield Recreation Ground	Summerseat Park
Edenfield Cricket Club	Egerton Cricket Club
Mount Lane Playing Field	West Bradford Playing Field
Fearn's Sports & Leisure Centre	Greenmount Cricket Club
Lanehead	School Lane
Michelin A.C	Brinscall St Johns C Of E School
Crowthorne School	Hillside School
Chatterton Recreation Ground	Beverley Playing Fields
Tockholes Cep Aided	St Johns Church Rec Ground
Benthead Playing Field	Eagley Infant School
Ribblesdale Wanderers Cricket Club	Old Doctors Recreation Ground
Clitheroe Rfc	Old Doctors Field
Goldshaw Booth Playing Fields	Coupe Green Primary School
Parsons Clough Playing Fields	Towns Meadow Playing Field
Ribblesdale High School And Technology College	Old Doctors Field
Stacksted Recreation Ground	Coupe Green Pf
Stacksteads Cricket Club	Turton High School Media Arts College
Clitheroe Castle	Tottington High School Sports Hall
Shawbridge (Clitheroe Fc)	St Josephs Rc Primary School
Edisford Cp	Gregson Lane Pf
Turn Recreation Ground	John Street Recreation Ground
Briercliffe Recreation Ground	Rawstron Street Stadium
Maden Recreation Ground	Holt House Playing Fields
Clitheroe Royal Grammar School	Longridge Ce
Bacup Cricket Club	Victory Park
Clitheroe Cricket Club	Bradshaw Cricket Club
Nelson And Colne College-Site 1	Walshaw Cricket Club
Turton & Edgworth Ce/Methodist P Controlled	Kestor Lane Recreation Ground
Riverside Ground (Ramsbottom United Fc)	
Moorland School Boarding School	
Hodge House Playing Fields	
Nuttall Park	
Bullholme Playing Field	
King George V Playing Fields	
Longridge Cricket Club	
Canon Slade Cofe School	

ATHLETICS TRACKS AND GRASS PITCHES	
Colne Cricket Club	
Park High School	
The Elton High School Sports Hall	
Clarence Park	
Barlow Park	
Higher Walton Pf	
Norden Cricket Club	
Grimsargh Playing Field	
Grimsargh Cricket Club	
Norden Community Primary School	
Thornleigh Salesian College	
Great Greens La	
Elton Cricket Club	
Astley Bridge Cricket Club	
Dow Lane Open Space	
Smithills Secondary School	
Ramsbottom Baths Cf	
Hoyle Playing Field	
Town Meadow	
Smithills Community Sports Centre	
Walton-Le-Dale Arts College & High School	
Withy Grove Park	
Brabins	
Ribbleton Park	
White Coppice Cricket Club	
Mardale Playing Fields	
Sharples Leisure Centre	
Todmorden High School	
Centre Vale Park	

HEALTH AND FITNESS SUITE	
New Era Complex	Pioneer Health Studio
Energie Fitness Club (Accrington)	Pendle Wavelengths
Hyndburn Sports Centre	Canberra Fitness Centre
Spa Naturel (Mercure Dunkenhalgh Hotel And Spa)	Pendle Health Studio
Rhyddings Business And Enterprise School	Swallow Leisure (Preston
The Fitness Bank Ltd	Spa Naturel (Mercure Last Drop Village Hotel And Spa)
Norden Sports Centre	Pendle Leisure Centre
Mercer Hall Leisure Centre	Natural Progression
Padiham Leisure Centre	Intershape Fitness
Shadsworth Leisure Centre	Whitworth Swimming Pool
Jjb Fitness Club (Blackburn	Whitworth Community High School
Body And Fitness	Longridge Leisure Centre
Audley Sports & Community Centre	Sharples Leisure Centre
Jjb Fitness Club (Blackburn Central)	Reps Gym & Sculptures

HEALTH AND FITNESS SUITE	
Roman Road Community Centre	Todmorden Sports Centre
Hv Fitness Suite	Stables Fitness & Leisure Club
Oakhill Academy	Virgin Active Club (Bolton)
St Mary's College	Total Fitness (Bolton)
Haslingden Sports Centre	Smithills Community Sports Centre
Waves Water Fun Centre	Kingfisher Health & Fitness Club
Probodyes	Bamber Bridge Leisure Centre
The Fitness Factory	Withins Leisure Centre
Blackburn College	Gym Works
Alder Grange Community And Technology School	Clayton Green Sports Centre
Sol Fitness	Next Generation Health Club (Lancashire)
Grapevine Fitness & Leisure Centre	Castle Leisure Centre
The Mill Health Studio	Silver's Fitness Centre
Crow Wood Leisure	Fitness For Life (Rochdale)
Invigor8 Health And Fitness	Maree Leisure (Gisburn)
Angelz Gym	Jjb Fitness Club (Bury)
Regency Gym At Darwen Vale	Village Leisure Club (Bury)
St Peters Centre	Oulder Hill Community Complex
Burnley Football Club Leisure & Community Programme	Shaw Hill Hotel Golf & Country Club
Spirit Of Sport	South Ribble Tennis Centre
Burnley Schools Sixth Form	Club Moativation (Bolton Centre)
Powerzone Gym & Fitness Centre	All Seasons Leisure Centre
T1 Health & Fitness Club	West View Leisure Centre
The Body Temple Gym	David Lloyd Club (Bolton)
St Bedes R C High School	Virgin Active Club (Preston)
Oaks Leisure Club	Ymca (Bolton)
Fearn's Sports & Leisure Centre	Bolton Lads & Girls Club
Bodies In Motion	Phoenix Health & Fitness Centre
Roefield Leisure Centre	Ramsbottom Swimming Pool & Fitness Centre
Lee Carter Leisure	Hicks Health Club
The Old Mill Hotel And Leisure Club	

SKI SLOPES AND ICE RINKS
Ski Rossendale
Pendle Ski Club
Blackburn Ice Arena

INDOOR TENNIS AND INDOOR BOWLS
Blackburn Northern Sports Club
Crow Wood Leisure
Ribble Valley Tennis Centre
Next Generation Health Club (Lancashire)
South Ribble Tennis Centre
David Lloyd Club (Bolton)
Blackburn & District Indoor Bowls Club
Old Mill Leisure Indoor Bowls Club

SPORTS HALL	
Moorhead Sports College	Longridge Leisure Centre
St Christophers C Of E School Sports Hall	Sharples Leisure Centre
New Era Complex	Todmorden High School
Hyndburn Sports Centre	Canon Slade Cofe School
Mount Carmel Roman Catholic High School : A Specialist Science College	Park High School
Rhyddings Business And Enterprise School	The Elton High School Sports Hall
The Hollins Technology College	Thornleigh Salesian College
Norden High School	Bolton Sixth Form College
Norden Sports Centre	The City Of Preston High School
Our Lady And St John Catholic Arts College	Smithills Community Sports Centre
Shadsworth Leisure Centre	Bamber Bridge Leisure Centre
Audley County Junior School Sports Hall	Withins Leisure Centre
Audley Sports & Community Centre	Clayton Green Sports Centre
St Augustine's Roman Catholic High School	Walton-Le-Dale Arts College & High School
St Michael With St John School Sports Hall	Next Generation Health Club (Lancashire)
Roman Road Community Centre	Castle Leisure Centre
Oakhill Academy	Brownedge St Mary's Roman Catholic High School And Sports College
St Mary's College	St Gabriels Rc High School Sports Hall
Haslingden Sports Centre	Bury College
Pleckgate High School	Broad Oak Specialist Sports College Sports Hall
Blackburn College	Oulder Hill Community Complex
Alder Grange Community And Technology School	Bury Church Of England High School
All Saints Catholic Language College	Falinge Park High School
St Wilfrids Community Leisure Centre	Holy Cross College
Queen Elizabeth's Grammar School	The Derby High School
Haslingden High School	All Seasons Leisure Centre
Darwen Moorland High School	West View Leisure Centre
Wensley Fold School	Rivington And Blackrod High School
Darwen Vale Community Leisure Centre	David Lloyd Club (Bolton)
St Peters Centre	Ymca (Bolton)
Unity College	Wardle High School
Burnley Football Club Leisure & Community Programme	Heywood Sports Complex
Spirit Of Sport	Heywood Community High School
Burnley Schools Sixth Form	Bolton Lads & Girls Club
St Bedes R C High School	Bolton School Boys' Division
Westholme School	Preston Muslim Girls High School
Fearns Sports & Leisure Centre	All Seasons Leisure Centre
Ribblesdale High School And Technology College	West View Leisure Centre
Roefield Leisure Centre	Rivington And Blackrod High School
Nelson And Colne College-Site 1	Tottington High School Sports Hall
Moorland School Boarding School	Whitworth Community High School
Woodhey High School Sports Hall	St Cecilia's Roman Catholic Technology College
Primet High School	Bowland High School
Pendle Leisure Centre	Turton Leisure Centre

SPORTS ORGANISATION

Blackburn Harriers Athletics Club	Bishop Plastics F.C.
Darwen Dashers Running Club	Black Dog F.C.
Ribble Valley Athletics Club	Black Horse (Darwen) F.C.
West Pennine Runners	Blackburn Athletic (BCL) F.C.
Avondale PTA Badminton Club	Blackburn Athletic (Blackburn) F.C.
College Badminton Club	Blackburn College Boy F.C.
Halsteads Badminton Club	Blackburn College F.C.
Independents Badminton Club	Blackburn Creative Packaging F.C.
Olympic Badminton Club	Blackburn Eagles F.C.
Telecom Badminton Club	Blackburn Girls
Westholme Badminton Club	Blackburn Job Centre Plus F.C.
Whitehall Badminton Club	Blackburn Olympic F.C.
YMCA (Blackburn) Badminton Club	Blackburn Police (Orphanage Cup) F.C.
Audley Police Boxing Club	Blackburn Rovers FC
Blackburn Northern Cricket Club	Blackburn Shamrock Junior F.C.
Blackburn Unity Cricket Club	Blackburn Teachers F.C.
Cherry Tree Cricket Club	Blackburn Town Youth F.C.
Darwen Cricket Club	Blackburn Warriors F.C.
East Lancashire Cricket Club	Blackburn with Darwen Borough Council (Environmental Dept) F.C.
East Manchester Cricket Club	Blackburn With Darwen Borough council F.C.
Edgworth Cricket Club	Blackburn Youths F.C.
Feniscowles Cricket Club	Blakewater College F.C.
Salesbury Cricket Club	Blue Star F.C.
North Lancashire Road Cycling Club	Blues Brothers (JJB B) F.C.
Accrington/Blackburn Fire Station F.C.	Bowling Green F.C.
Acme Refrigeration F.C.	Brinscall (Seniors) F.C.
AFC Feni (FM)	British Telecom F.C.
AFJ United F.C.	Brookhouse Composites F.C.
AK Utd (JJB B) F.C.	Cabin End F.C.
Akzo Nobel (Seniors) F.C.	Caligen Foam Ltd F.C.
Akzo Nobel J.F.C.	Callender F.C.
Al Farooq F.C.	Capita QS F.C.
Allstar Reds (JJB B) F.C.	Capita Sevens F.C.
Aqueduct F.C.	Catalans (FM) F.C.
Arden Hall Juniors F.C.	Causeway Carpets F.C.
ASD Metal Services F.C.	Chadfort Engineering F.C.
Audley Boys (Blackburn Unity in Community League) F.C.	Chelton D C F.C.
BAE Systems I&SP F.C.	Childrens Services Crowd Pleasers F.C.
Bank Top F.C.	CLAS - Spiral Heights F.C.
Beach F.C.	Clayton-Le-Moors F.C.
Bee Hive (Saturday) F.C.	Clifton FC (Blackburn)
Bee Hive United F.C.	Cobham Defence F.C.
Beechwood Boys F.C.	Cosmotec F.C.
Belthorn Dog Inn F.C.	Daniel Thwaites F.C.
Belthorn United F.C.	Darwen F.C.

Bibby Distribution F.C.	Darwen Group Ltd F.C.
Darwen Ladies F.C.	J.F.C. Dynamos
Darwen Rangers JFC	King Edward Guide F.C.
Darwen Victoria F.C.	Kirk Scaffolding Ltd F.C.
Duke of Welly (JJB B) F.C.	Knuzden Brook Pub F.C.
Dutton Carpets F.C.	Knuzden Juniors F.C.
EAS (JJB B) F.C.	Knuzden Youth F.C.
EAS Borough Hotel (Sunday) F.C.	Koknis F.C.
EDC Blackburn F.C.	L G Philips Displays Blackburn F.C.
Edge End (FM) F.C.	Lammack Juniors F.C.
EI-WHS F.C.	Lancashire Evening Telegraph F.C.
Emerson & Renwick F.C.	Livesey Boys (JJB B) F.C.
Engineers Arms F.C.	Loks Plasma F.C.
Enty F.C.	Lucite International F.C.
Express - Gifts F.C.	M H G Rovers F.C.
Farleys Solicitors F.C.	Manxman F.C.
FC Feniscowles	Manya Tours F.C.
FC ZY Bar (FM)	Marigolds F.C.
Feniscowles St Pauls F.C.	McDonalds F.C.
Fenny Juniors	MDA Ltd F.C.
Fenny Reccers F.C.	MDA United (FM) F.C.
Fenny's Farmers F.C.	Micromatic F.C.
First Time Wanderers (JJB B) F.C.	Mill Hill (Blackburn) F.C.
Florence Pub F.C.	Mill Hill F.C.
Foresters Arms F.C.	Mill Hill St. Peters F.C.
Fountain Inn (FM) F.C.	Mitchell Scaffolding (FM) F.C.
Gillibrand Accident Repair Centre F.C.	Neales Waste Management F.C.
GPV Group F.C.	Neighbourhood Engagement F.C.
Graham & Brown F.C.	New Gardeners F.C.
Granby Marketing Services F.C.	Oak Tree (Blackburn Combination) F.C.
Greenfield Inn F.C.	Oakdale Rovers F.C.
Grey Horse (JJB B) F.C.	Old Blackburnians F.C.
H D N L F.C.	Old Blackburnians Lammack F.C.
Hamilton F.C.	Old Boltonians AFC
Happy Grant F.C.	Old Toll Bar F.C.
Hardly Athletic (FM) F.C.	Ossy Stop & Rest F.C.
Haslingden Teachers F.C.	Osy Rangers
Havelock (Blackburn Sunday) F.C.	Park Lane Rangers 1975 F.C.
Havelock (FM) F.C.	Pentland (7-a-side) F.C.
Heys Inn F.C.	Pentland F.C.
Hidayah F.C.	Perry St Germaine (JJB B) F.C.
Hole House F.C.	Plane Tree Inn (FM) F.C.
Hollins Mill F.C.	Pleasington C & Ac F.C.
Hordens F.C.	Plough (Blackburn) F.C.
Initial Electronic Security F.C.	Policy and Transport F.C.
Intack F.C.	Precision Polymer Engineering F.C.
Inter Mill Hill Girls F.C.	Presspart Manufacturing Ltd F.C.
Inter Millham F.C.	Prince of Wales (Blackburn) F.C.

Inward House Projects F.C.	Promethean Technologies Group F.C.
Islington F.C.	Punchbowl Inn F.C.
Queens Park F.C.	VBR (Witton park 7-a-side Summer League) F.C.
Queens Park W.M.C. (Hole House) F.C.	Voith Fabrics F.C.
Real Caprice F.C.	Walker Steel F.C.
Real Juniors F.C.	Ward Knowles F.C.
Real Playerz F.C.	Welding Engineering F.C.
Red Rose Drylining F.C.	West End Cyc (Seniors) F.C.
Regeneration Housing & Neighbourhood F.C.	Whalley Juniors F.C.
Rhoden Inn F.C.	Wheulton (folded) F.C.
Ribble Valley Glass F.C.	Whiltshire (Witton 7-a-side) F.C.
Rising Sun F.C.	White Bull (Blackburn) F.C.
Roman Road (folded) F.C.	Wilpshire Wanderers F.C.
Rome (QPR Stars) F.C.	Witton Park F.C.
Rome F.C.	Wolstenholme Int F.C.
Rossendale Badgers F.C.	Woodlands (Sunday Memorial) F.C.
Royal Mail Blackburn F.C.	Workforce Development - Lifelong F.C.
Royal Oak (Blackburn) F.C.	World XI F.C.
RPC Containers F.C.	Worth Avenue F.C.
Saphire Windows F.C.	Blackburn Golf Club
Seddons Trotters (FM) F.C.	Darwen Golf Club
Senator Int A F.C.	Pleasington Golf Club
Shadsworth Sure Start F.C.	Jump UK Trampoline Club
Shazmjall (JJB B) F.C.	Blackburn with Darwen Sports Acro Club - Gymnastics
Sleepmasters F.C.	Blackburn Northern Hockey Club
Social Services F.C.	Witton Warriors Hockey Club
Social Services Finance F.C.	Beach Judokwai
Sparta Traffic Highways F.C.	Mill Hill Judo Club
Sporting Athletic F.C.	Shadsworth Judo Club
Sporting Cutwood F.C.	Darwen Junior Netball Club
Sportsmans Arms (Blackburn) F.C.	Pendle Forest Orienteering Club
St Regis (Hollins) F.C.	Accrington Rugby League Football Club
St. Marys College F.C.	East Lancashire Lions Rugby League Football Club
St. Matthews F.C.	Blackburn Rugby Union Football Club
Stanley Arms (Blackburn) F.C.	Jumbles Sailing Club
Station Athletic F.C.	Bolton Sailing Club
Station Hotel (Blackburn) F.C.	Blackburn Northern Squash Club
Station Hotel F.C.	East Lancashire Club - Squash
System Hygiene F.C.	Blackburn Centurions Swimming Club
Tensar Ltd F.C.	Darwen Amateur Swimming Club
The Bluebells F.C.	Gallica (Lancashire) Swimming Club
The George Hotel F.C.	Blackburn Northern Tennis Club
The Intack Inn F.C.	Crosshill Tennis Club
The Lion Hotel F.C.	Darwen Tennis Club
The Moorings F.C.	Feniscowles and Pleasington Tennis Club
Training 2000 F.C.	Burnley Athletics Club
Turton F.C.	Burnley Basketball Club
Twin Valley Homes F.C.	New Sandygate Boxing Club

Ultraframe F.C.	Roche Boxing Club
Uncle Jacks Lower Darwen F.C.	Burnley Cricket Club
United Utilities F.C.	Burnley GSOB Cricket Club
Lowerhouse Cricket Club	Ighten Leigh (Seniors) F.C.
Padiham Cricket Club	Ighten Leigh Juniors F.C.
Clayton Velo Cycling Club	Jetsun Sunbeds F.C.
A.C. Michelin	Jim's Boys F.C.
A.D. United F.C.	Junction F.C.
Accent Group F.C.	Junior Clarets F.C.
AFC Padiham	Kibble Clarets F.C.
Borrowdale United (Burnley) F.C.	King Street (Burnley) F.C.
Breaking Barners In Burnley F.C.	Lancashire County Council F.C.
Briercliffe Craven F.C.	Lancashire Youth Association F.C.
Briercliffe Rovers F.C.	Lcp Juniors F.C.
Brunlea Dynamos F.C.	Life Church F.C.
Brunlea F.C.	Longside F.C.
Burndale F.C.	Lounge F.C.
Burnley Borough Council F.C.	Lowerhouse Canteen F.C.
Burnley Boys Club F.C.	M.J. Trust F.C.
Burnley College F.C.	Malt Shovel Pub (Burnley Sunday) F.C.
Burnley F.C.	Miners (3) F.C.
Burnley G.S.O.B. F.C.	Myerscough College East Lancs F.C.
Burnley Girls & Ladies F.C.	Padiham F.C.
Burnley Knights F.C.	Padiham Saints Junior F.C.
Burnley League F.C.	Padiham Town F.C.
Burnley Miners Working Mens Club F.C.	Padiham Youth Centre F.C.
Burnley Rangers F.C.	Palace House United F.C.
Burnley United F.C.	Paradise Island F.C.
Burnley United Juniors F.C.	Pendle Rovers F.C.
Burnley West End Athletic Youth F.C.	Prairie Athletic F.C.
Burnley Wood Casuals F.C.	Prairie Rangers F.C.
C.W.R. Scaffolds F.C.	Prairie United F.C.
Calderstones FC	R.O.B.O.T. Detached Youth Service F.C.
Chadwick Motor Services F.C.	Railway (Burnley & District League) F.C.
Chai Centre F.C.	Railway F.C.
Cliviger Colts F.C.	Railway Hotel (Burnley Sunday) F.C.
Coalclough Casuals F.C.	Railway Inn (padiham) F.C.
Commercial A F.C.	Readstone United
Commercial Inn F.C.	Real Hapton F.C.
Daneshouse F.C.	Red Room F.C.
Falkland F.C.	Red Rose Sports Club (Burnley Sunday) F.C.
Fc Mecca (DO NOT USE)	Roof Top Bar F.C.
Fulledge Colts F.C.	Rose & Thistle F.C.
Fulledge Youth Football Club F.C.	Rosegrove Unity WMC F.C.
George IV (Saturday) F.C.	Sovereign Group F.C.
George IV (Sunday) F.C.	Stanley Black Cats F.C.
Glory F.C.	Stoops Youth & Community Centre F.C.
Goodshaw United F.C.	Sun Inn (Burnley Sunday) F.C.

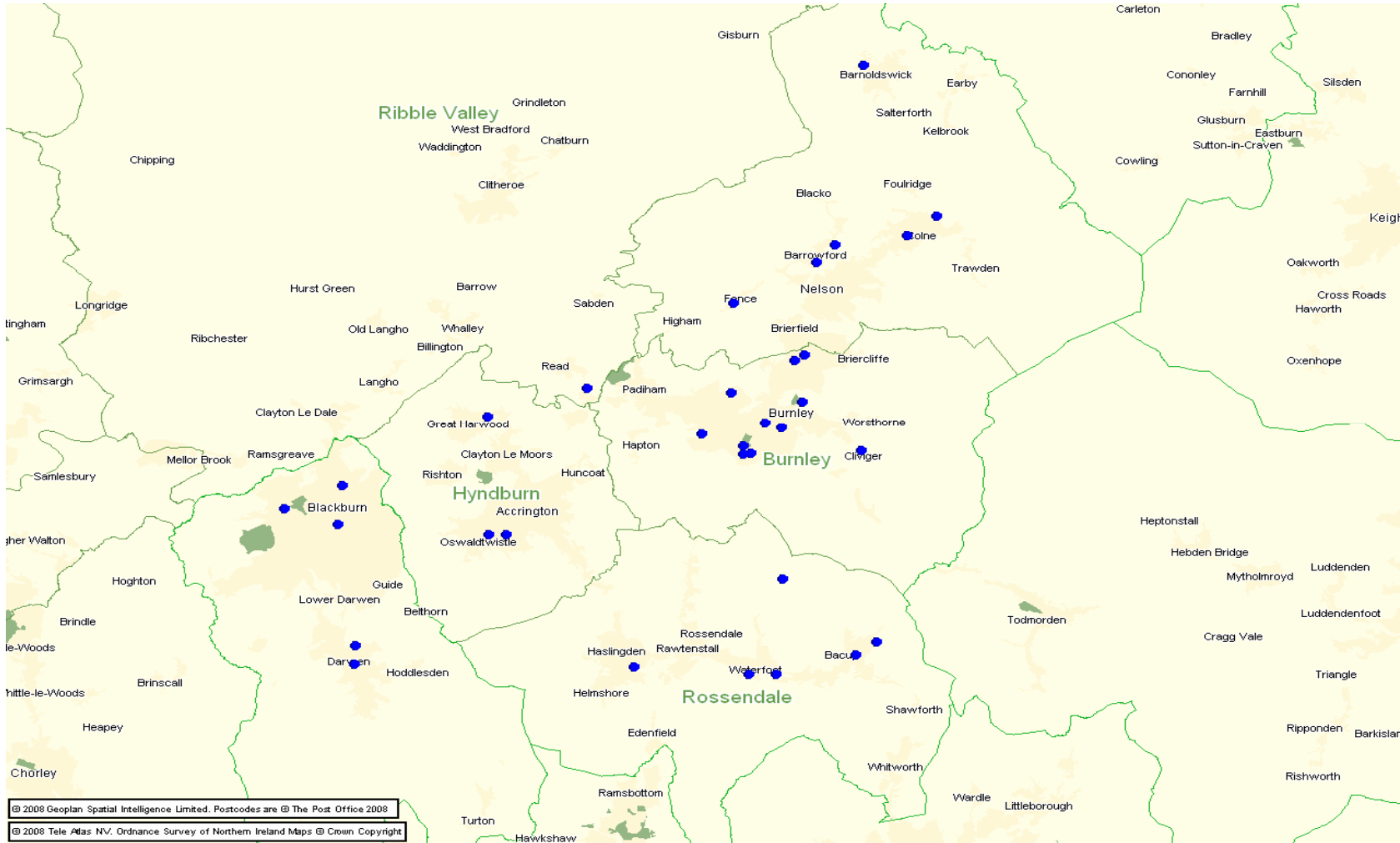
Gordon Lennox F.C.	Sun Inn Blue F.C.
Havelock (Burnley) F.C.	Swan Inn F.C.
Huncoat F.C.	The Dugdale (Burnley Sunday) F.C.
	The Falcon F.C.
The Lounge F.C.	Baileys F.C.
The Red House F.C.	Bamford (Hyndburn) F.C.
Ultra Finishing F.C.	Baxenden F.C.
Walwerden Warriors F.C.	Baxenden Villa F.C.
Worsthorne F.C.	Black Horse (Accrington) F.C.
Burnley Golf Club	Black Horse (Hyndburn) F.C.
Towneley Golf Club	Bold Street F.C.
Burnley Gym Club	Brewers Arms F.C.
Brunokwai - Burnley Judo Club	Bridge Inn (Accrington) F.C.
Burnley Judo Club	Broadway Central F.C.
Burnley Junior Netball Club	Burnley Road F.C.
Burnley Squash Club	Central (Hyndburn) F.C.
Crow Wood Leisure Squash Club	Central F.C.
Bobcats Swimming Club	Chris's Cougars F.C.
Burnley Swimming and Water Polo Club	Church Town (Hyndburn Sports Centre) F.C.
Rosegrove Amateur Swimming Club	Church Town Reserves (Hyndburn Sports Centre) F.C.
Burnley Lawn Tennis Club	Clayton Park Rangers F.C.
Crow Wood Leisure	Clayton-le-Moors (Memorial League) F.C.
Towneley High Tennis Club	Crown Rovers F.C.
Burnley Swimming and Water Polo Club	E.W.M.B.B.F.C.
Hyndburn & Blackburn Angling Club	Enfield F.C.
Athletics Clubcrington Road Runners	Ferngore Allstars F.C.
Clayton Le Moors Harriers	Freemasons F.C.
Hyndburn Athletics Club	Globe Bullough Park F.C.
Abacus Blackburn Badminton Club	Great Harwood Rovers Boys F.C.
St Nicholas Badminton Club	Great Harwood Rovers F.C.
St Philips (Accrington) Badminton Club	Greyhound Ford Junior F.C.
Tag Badminton Club	Halsall FC
Accrington Cricket and Tennis Club	Harwood F.C.
Baxenden Cricket Club	Hope & Anchor F.C.
Church and Oswaldtwistle Cricket Club	Hope FC
Enfield Cricket Club	Huncoat United Junior F.C.
Great Harwood Cricket Club	Hyndburn Bridge F.C.
Oswaldtwistle Immanuel Cricket Club	Inter-Mi-Van (Hyndburn) F.C.
Rishton Cricket Club	Irwell Valley F.C.
Blackburn & District Cyclists' Touring Club	John Fenwick F.C.
North Lancashire Cyclists Touring Club	King St F.C.
Accrington & Rossendale College F.C.	King Street F.C.
Accrington Amateurs F.C.	Knuzden F.C.
Accrington Girls & Ladies (AGSA) F.C.	Lowerhouse Knights Juniors F.C.
Accrington Ladies 91 F.C.	New Era (Hyndburn Sports Centre) F.C.
Accrington Loyal F.C.	No Nay Never (Hyndburn) F.C.
Accrington Stanley F.C.	North South Divide F.C.
Accrington Stanley Ladies F.C.	Old Mother Red Cap F.C.

Accrington United F.C.	Oswaldtwistle Rangers F.C.
Akash F.C.	Oswaldtwistle Rangers J.F.C.
Appleby's Accountants F.C.	Oswaldtwistle St Marys F.C.
Arden Inn F.C.	Oswaldtwistle United F.C.
B. McDermot & Sons Builders F.C.	
Padiham Youth F.C.	Nelson Cricket Club
Parker Engineering F.C.	Rolls Royce Cricket Club
Peel Park (Hyndburn Sports Centre 7-a-side) F.C.	Pendle Forest Cycling Club
Peel Park F.C.	Barnoldswick Barons F.C.
Pegasus F.C.	Barnoldswick Town Sunday F.C.
Real Stars F.C.	Barnoldswick Youth F.C.
Rishton F.C.	Barrowford Celtic F.C.
Rishton United Girls	Barrowford United (Craven & District) F.C.
Rishton United Juniors F.C.	Barrowford Ycw F.C.
Royal Hotel (Accrington) F.C.	BMP Europe (FM) F.C.
Royal Mail (Hyndburn) F.C.	Boundary Mill (FM) F.C.
Royal Oak (Oswaldtwistle) F.C.	Brierfield Celtic F.C.
St. Josephs F.C.	Burnley Belvedere F.C.
Stanhill WMC F.C.	Colne Athletic F.C.
Stanley St. Clarets F.C.	Colne Clarets Junior(No longer in existance) F.C.
Sydney Street W.M.C. F.C.	Colne F.C.
The Forts Arms F.C.	Colne Fc Juniors
Tranmere Spartans F.C.	Commercial Old Boys (Vets) F.C.
Trotters FC	Crown Hotel F.C.
Wellington (Clayton-le-Moors) F.C.	David St F.C.
Whinney Hill F.C.	Dynamo Vosc (FM) F.C.
Woodnook F.C.	Foulridge Old Boys (FM) F.C.
Accrington & District Golf Club	FUFC (FM)
Baxenden & District Golf Club	George & Dragon (Saturday) F.C.
Great Harwood Golf Club	Golden Ball F.C.
Green Haworth Golf Club	Graham Engineering Redskins F.C.
Rishton Golf Club	Independiente (Futsal) F.C.
Accrington Gymnastics Club	Intake F.C.
Bredakwai Judo Club	Life F.C.
Hyndburn Netball Youth Club	M65 Gas F.C.
East Lancashire Sailing Club	Mighty Roses F.C.
Hyndburn Sports Centre Squash Club	Nelson F.C.
Accrington Swimming Club	Nelson Juniors F.C.
Great Harwood Otters Swimming Club	Nelson Poultry F.C.
Pioneer 79 Swimming Club	North Valley Rangers F.C.
East Lancashire Table Tennis Club	NWR2004 Ltd F.C.
Accrington Cricket and Tennis Club	Old Band Club F.C.
Pendle Athletics Club	Paak AFC
Trawden Athletics Club	Pendle Blues (Pendle Charity) F.C.
Colne Badminton Club	Pendle Forest Sports Club F.C.
Pendle Paddlers Canoe Club	PSV Hangover (FM) F.C.
Whitehough O.E.C. - Canoe	PTE F.C.
Barnoldswick Cricket Club	Real Chipheads (FM) F.C.

Burnley Belvedere Cricket Club	Real Queens F.C.
Colne Cricket Club	Red Lion (Colne) F.C.
Earby Cricket Club	Reunion F.C.
Hussaina Cricket Club	River Plate F.C.
Ithaad Cricket Club	Rock Rovers (Futsal) F.C.
Kashmir Cricket Club	Rock Rovers F.C.
Rosehill United (FM) F.C.	Pioneer Community Boxing Club
Sacred Heart (Colne) F.C.	Sharples Police Boxing Club
Santos (Futsal) F.C.	Bacup Cricket Club
Scruples F.C.	Edenfield Cricket Club
Shepherds Arms F.C.	Haslingden Cricket Club
Shorthomers F.C.	Rawtenstall Cricket Club
Sparta Padiham (FM) F.C.	Rosendale Road Cycling Club
Star Rangers F.C.	Pendle/Haslingden Fencing Club
T.S.B. F.C.	Bacup Borough F.C.
Team RVDB (FM) F.C.	Bacup Borough Ladies F.C.
Textstyles F.C.	Bacup Cricket Club (2) F.C.
The Pigeons Return F.C.	Bacup Cricket Club (Bacup) F.C.
Trawden Celtic Juniors F.C.	Bacup Junior F.C.
Trawden F.C.	Bacup United F.C.
Union (Colne) F.C.	Birches F.C.
Walton United F.C.	Black Bull F.C.
Weston F.C.	Commercial Hotel (Memorial) F.C.
Whiston Vets FC	Commercial Old Boys (HDM) F.C.
Colne Golf Club	Craven Heifer (2) F.C.
Marsden Park Golf Club	Edenfield H & J F.C.
Nelson Golf Club	George & Dragon (Sunday) F.C.
Nelson & Pendle Forest Sports Club - Hockey	Glenn Ross Girls
Nelson & Rosendale Hockey Club	Glenross Junior F.C.
Nelson Ladies Hockey Club	Haslingden Junior F.C.
Pendle Judo Club	Haslingden Juniors Girls F.C.
Accrington Amateur Rugby League Football Club	Haslingden St Marys F.C.
Pendle Atoms Women Rugby League Football Club	Helmshore Harriers F.C.
Pendle Panthers Rugby League Football Club	Joiners Arms (Bacup) F.C.
West Craven Warriors Rugby League Football Club	Madison Park F.C.
Burnley Rugby Club	Pennine Rangers F.C.
Colne and Nelson Rugby Union Football Club	Ramsbottom Town F.C.
Pendle Rugby Union Football Club	Rawtenstall F.C.
Burwain Sailing Club	Rose and Crown (Haslingden) F.C.
Kelbrook Shooting Lodge	Rosendale Amateurs F.C.
North West Field Target Shooting Association	Rosendale Mavericks F.C.
Colne Amateur Swimming Club	Rosendale United F.C.
Craven Tennis Club	Rosendale United FC Girls
Rosendale Harriers & Athletics Club	Rosendale United Junior F.C.
Badgercote Badminton Club	Rosendale United Supporters Association F.C.
Edenfield Badminton Club	Rosendale United Veterans F.C.
Fearn Badminton Club	Rosendale Utd J.F.C.
Goodshaw Badminton Club	Rosendale Valley Junior F.C.

Haslingden High Badminton Club	Rostrons F.C.
Holy Cross Badminton Club	Stacksteads St. Josephs F.C.
Middleton Recreation Centre Badminton Club	Station Hotel (Helmshore) F.C.
Phoenix (Rossendale) Badminton Club	Whitworth Valley F.C.
Rising Bridge Badminton Club	Bacup Golf Club
Transport Badminton Club	Rossendale Golf Club
Rossendale Basketball Club	Haslingden Handball Club
Bacup Judo Club	
Rossendale Judo Club	
Rossendale Rugby Union Football Club	
Haslingden Sports Centre Squash Club	
Bacup Swimming Club	
Haslingden Amateur Swimming Club	
Rawtenstall Swimming Club	
Whitworth Swimming Club	
Parkwood Lawn Tennis Club	

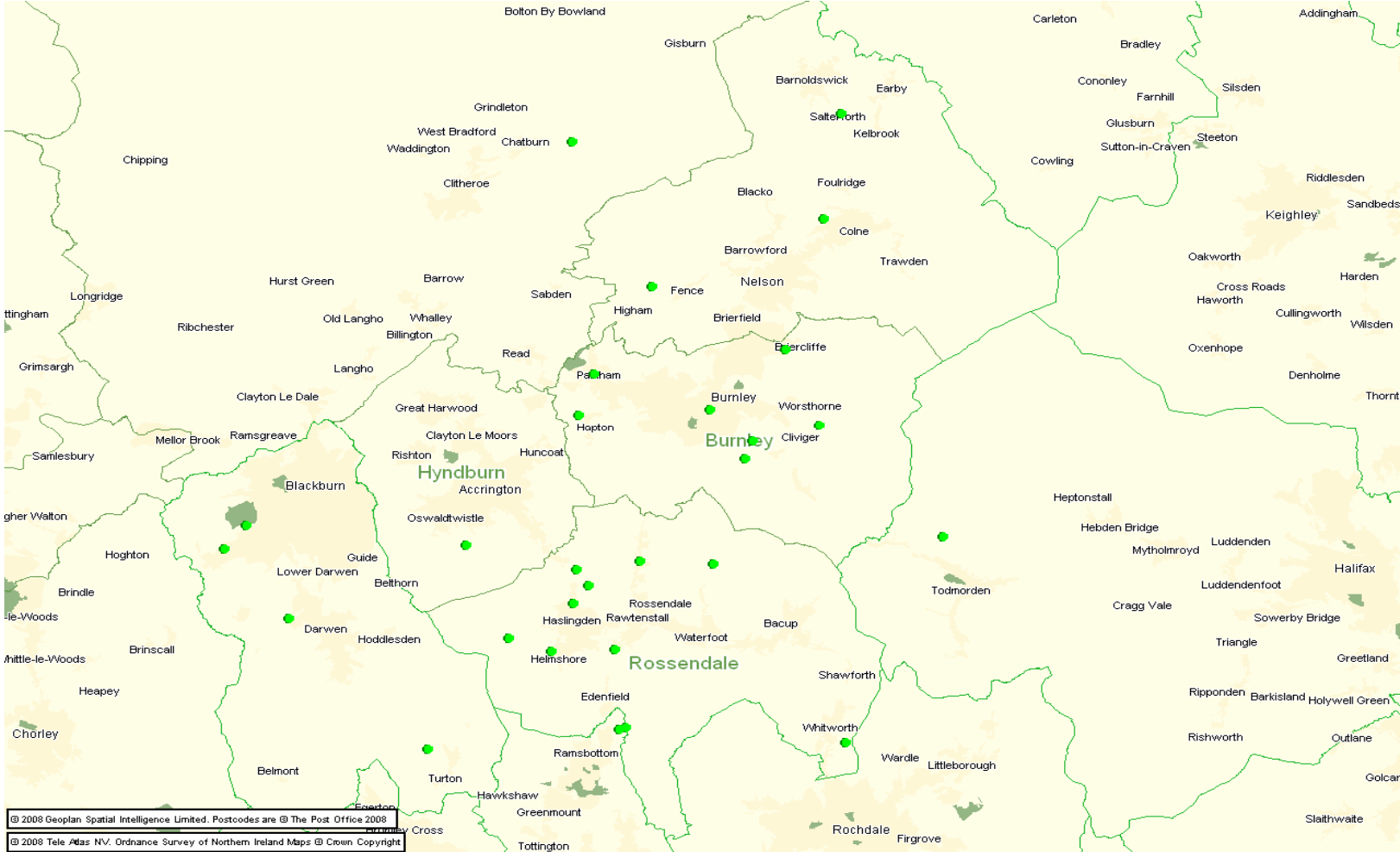
ARTS



ARTS

BURNLEY	BLACKBURN AND DARWEN
Burnley Youth Theatre	Morris Dancers (Darwen)
Mid Pennine Arts	Blackburn Arts Club
Horse and Bamboo Theatre	Darwen Library Theatre
Pendle Border-line Theatre Company	Witton Country Park
Burnley Youth Theatre	Community Arts at Action Factory
Sambury Decorative and Fine Arts Society	Dance and Performing Arts Centre
St. James Players	HYNDBURN
Burnley & Pendle G&S Theatre Company	Hyndburn Dance Festival
Burnley Garrick Club	Accrington Theatre Group
Burnley Festival	Accrington Video and Camcorder Club
Burnley Light Opera Society	Oswaldtwistle Players
Greenbrook Methodist Amateur Operatic Society	ROSSENDALE
St Cuthbert's Community Hall	St Mary's Players
Basics Junior Theatre School	Rosendale Players
Burnley Pantomime Society	Rosendale Valley Sounds Wind Band
Briercliffe Ladies Group	Water Brass Band
Arden Youth Choir	Royal Court Theatre
Burnley Mechanics Theatre	Horse + Bamboo Theatre
PENDLE	THROUGHOUT THE COUNTY
Pendle Hippodrome Theatre Ltd	Ludus Dance
part of ^ Pendle Hippodrome Theatre Company	
part of ^ Pendle Hippodrome Youth Theatre	
Painting for Pleasure (Barnoldswick)	
Friends of Pendle Arts Gallery	
Pendle Movie Makers (formerly Pendle Film Society)	
Pendle Youth Choir	
Nelson Civic Ladies Choir	
Burnley Municipal Choir	

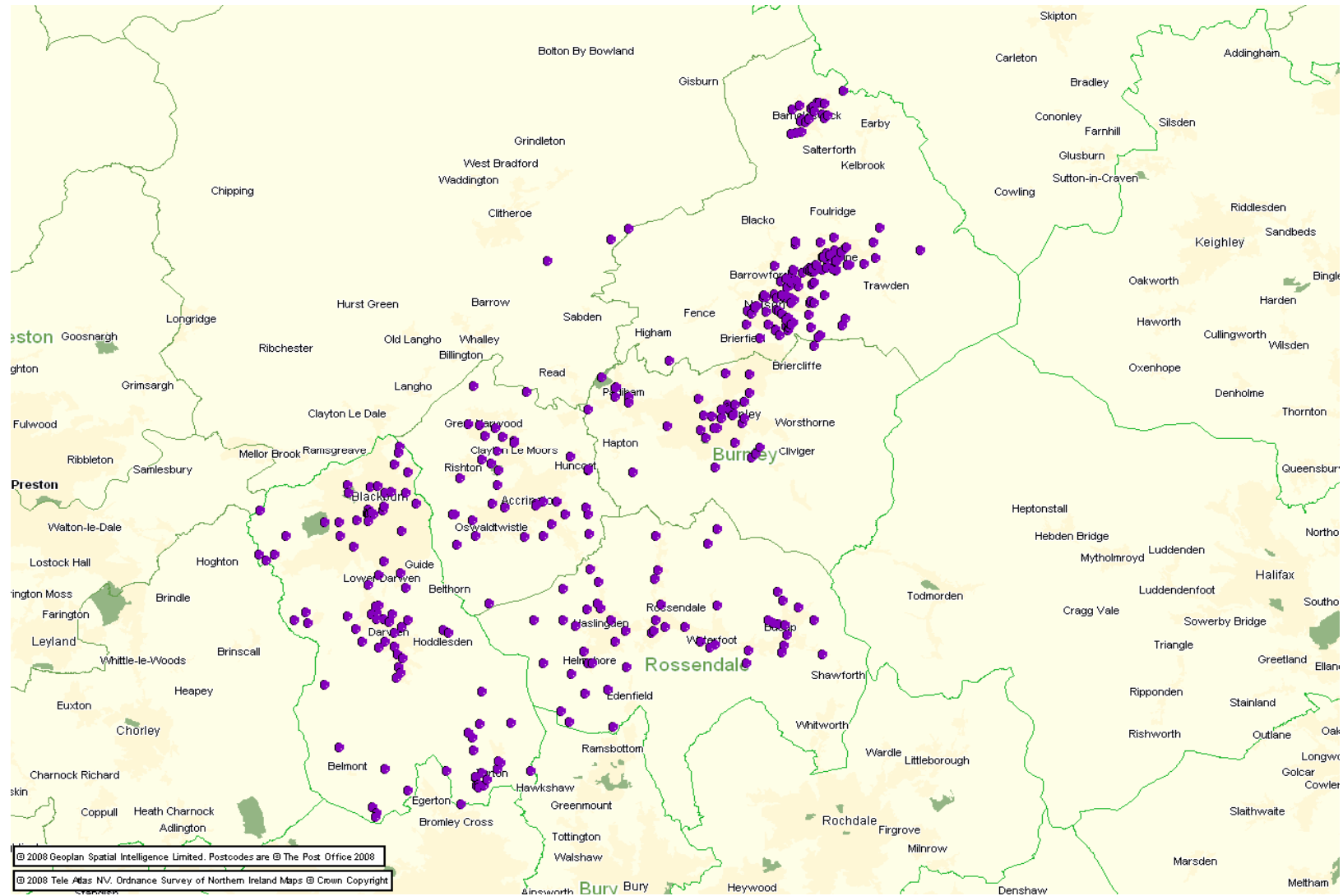
COUNTRYSIDE RECREATION



COUNTRYSIDE RECREATION

BURNLEY	ROSSENDALE
skateboarding at queens park	Bridge End Helmshore (Rossendale walk 15)
Gawthorpe Circular	Haslingden Grane (walk 93)
The Wayside Arts Trail	Hollins Lane and Dearden Clough (walk 63)
Burnley Way Walks	Helmshore Viaduct & Park Road (walk 52)
Walk 1, Weavers Triangle to Queen St Mill	Irwell Vale and Strongstry (walk 56)
Walk 2, Queen St Mill to Hurstwood	Irwell Vale River Walk (walk 5)
Walk 3, Hurstwood to Portsmouth (Cornholme)	Limey Lane and Green Hill Clough (walk 34)
Walk 4, Portsmouth (Cornholme) to Towneley	Lumb and Water Circular (walk 73)
Walk 5, Towneley to Hapton	Rawtenstall and Oakenhead Wood (walk 89)
Walk 6, Hapton to Weavers Triangle	Rushy Hill, Whitworth (walk 79)
BLACKBURN AND DARWEN	Walks to Top O'Slate & Halo
Darwen Tower Walk 1	Walk 1, from Haslingden
Darwen Tower Walk 2	Walk 2, from Winfield in Rising Bridge
Reelers Trail Walk 2	Walk 3, from East Lancashire Railway Station, Rawtenstall
Beamers Trail	Walk 4, from Crawshawbooth
Tacklers Trail	Walk Britain (Rossendale)
Warpers Trail	Walk 2624 - Tor Hill & High Moss, Nr Haslingden
Ramble from Nab's Head/Samlesbury	Walk 2564 - Calf Hey, Ogden & Holden Wood Reservoirs
PENDLE	HYNDBURN
Brontes Walk	Hynburn Clogg
The West Craven Way pt 1	
The West Craven Way pt 2	
Witches Trail Walks	
The Western Loop	
The Eastern Loop	
Pendle Canal Walks	
Circular Walk 1, Mile Tunnel & Slipper Hill	
Circular Walk 2, Wanless Bridge & Barrowford Locks	
Circular Walk 3, Lake Burwain	
Circular Walk 4, Foulridge Wharf & County Brook	
The Wycoller Panopticon Walk	
Walk Britain (Pendle)	
Walk 1267 - Pendle Hill from Barley Green	
Walk 1818 - Pendle Hill from Downham	
Walk 1287 - A circuit of Pendle Hill from Barley Green	

ARCHAEOLOGICAL SITES, FINDS, MONUMENTS



CINEMAS

Vue Cinema

Vue Cinema

Apollo Cinema

Stage & Screen

CULTURAL ORGANISATIONS

BURNLEY	
Burnley College	Pennine Inc
Burnley Express	St Peter's Parish Church Concerts
Burnley Wildlife Advisory Group	Padiham Market Town Initiative
Burnley Youth Theatre	Burnley and Pendle Miniature Railway Society
Friends of Thompson and Queen's Parks	Burnley Civic Society
Project Padiham and Friends of Memorial Park	Burnley and Pendle Music Society
New Era Enterprises	Friends of Burnley Basketball
Training and Access Point	Friends of Burnley Wood Community Centre
Towneley Hall	Burnley Football Club Community Sports Trust
Initiative Burnley	Burnley Municipal Choir
Mid Pennine Arts	Burnley Play Association
East Lancs into Employment	
Burnley and District Chamber of Trade	BLACKBURN WITH DARWEN
Burnley and District Gilbert and Sullivan Society	Action Darwen Valley
Burnley and District Historical Society	Akzo Junior Football Club
Burnley and District Sub-Aqua Club	Blackburn Athletics Development Group
Burnley and Pendle Music Society	Blackburn Bowls Partnership
Burnley Festival	Blackburn Cricket Development Group
Burnley Goshin Kempo Ju Jitsu Club	Blackburn Football Development Group
Burnley Mechanics	Blackburn Naturalists Field Group
Burnley Municipal Choir and Orchestra	Blackburn Rygby Union
Burnley Pantomime Society	Blackburn Sunday League
Burnley, Pendle and Rossendale, Council for Voluntary Service	Blackburn with Darwen Council for Voluntary Services
Chamber of Trade	Blackburn with Darwen PCT
East Lancashire Partnership	Blackburn with Darwen Sports Council
Gems	British Horse Society
Gawthorpe Hall	British Waterways
Leisure in Burnley	BTCV
National Trust	CABE Space
Padiham Sports Club	Campaign for the Protection for Rural England
Sustainability Action Partnership	Community Network
The Ramblers Association	Darwen Rangers Junior Football Club
Unique Underwater Limited	Design East Lancashire
Weaver's Triangle Trust	ELWOOD
Burnley Swimming Development Forum	Friends of Ashton Park
Burnley Football Club	Friends of Bold Venture Park
Daneshouse and Stoneyholme Healthy Living Centre	Friends of Corporation Park
Connexions Ltd	Friends of Griffin Park
William Thompson Centr	Friends of Queens Park
Burnley Music Festival	Friends of Sunnyhurst Wood
Myerscough College	Friends of Whitehall Park
SHOUT Programme	Friends of Witton Park
Sure Start Burnley	Groundwork Blackburn

Fifty Something Theatre Company	Lancashire Football Association
Burnley Light Opera Society	Mellor Juniors Football
BLACKBURN WITH DARWEN	PENDLE
NEWRAD Fisheries Club	Bodies in Motion (Pendle) Ltd
NEWRAD Conservation and Wildlife	Burnley and Pendle Green Space Ltd
Oakdale Rovers Football Club	Burnley and Pendle Multi-Racial Playbus Association
Old Blackburnians Football Club	Friends of Pendle Heritage
Rambler's Association	Pendle Club
Ribble Valley Pony Club	Pendle District Civic Trust
St Bedes Specialist Sports College	Pendle Environment Network
South Asian Arts and Cultural Association	Pendle Forest Model Railway Society
Wildlife Trust for Lancashire, Manchester and North Merseyside	Pendle Hippodrome Theatre Ltd
The Woodlands Trust	Pendle Opera Group
Twin Valley Homes	Pendle Rugby Club
West Pennines Moors Partnership	Pendle Youth Orchestra Association
Blackburn Music Society	Colne Dramatic Society
Blackburn Civic Society	Colne and Valley Halstead Railway Trust
Blackburn Gramophone Society	Colne Valley Museum
Blackburn and East Lancashire Model Railway Society	Colne Valley Male Voice Choir
Blackburn Artists Society	Colne Valley Youth Orchestra Society
Friends of Blackburn Museum	Colne Operatic Society
Friends of Blackburn Cathedral	Nelson Arion Glee Male Voice Choir
Blackburn Hindu Cultural and Recreational Society	Nelson Civic Ladies Choir
Blackburn Musical Theatre Company	Nelson Festival
Blackburn Rovers Community Trust	Nelson and District Choral Society
Blackburn Symphony Orchestra	Haslingden Recreational Development Organisation
Blackburn with Darwen Healthy Living	
Darwen Transport Museum Trust	
Mellor War Memorial Scholarship Fund	
ROSSENDALE	
Littoral	
Community Action in Rossendale	
Friends of Rossendale Museum	
Rossendale Civic Trust	
Rossendale Rays Multi-Ability Swimming Club	
Rossendale Players	
Bacup Natural History Society	
Bacup Amateur Operatic and Dramatic Society	
HYNDBURN	
Community Gardening (Ribble and Hyndburn)	
Hyndburn Comets Majorette Group	
Hyndburn Cultural Association	
Hyndburn Dance Festival	

Hyndburn Local History Society
Accrington Theatre Group
Accrington Amateur Operatic Society

FESTIVALS

BLACKBURN WITH DARWEN
Celebrate Blackburn
Blackburn Festival of Speech, Music and Dance
Darwen Live Music Festival
West Pennine Moors Walking Festival
Blackburn Town Centre Cycle Race
Pennine Lancashire Festival of Food and Culture
BURNLEY
Burnley Community Festival
Burnley National Blues Festival
Burnley Balloon Festival
Burnley Walking Festival
Colne Blues Festival
Higham Scarecrow Festival
HYNDBURN
Hyndburn Mela and Community Festival
Pennine Lancashire Food and Culture Festival
Clog and Folk Festival
Rosendale
Bacup Film Festival
Rosendale Walking Festival
Rosendale Festival
Rural Rosendale Walking Festival
Rosendale Puppet Festival
Rosendale Food Festival
PENDLE
Pendle Festival
Pendle Bike Fest
Pendle Beer Festival
Pendle Walking Festival
Pendle Canal Festival
Colne Town Centre Grand Prix
Pendle Pedal
Freedom Series, Guided Cycle Rides
Nelson Arts Festival
Nelson Jazz Festival
Colne Valley Festival

APPENDIX F

PRIMARY RESEARCH QUESTIONNAIRE

Questionnaire

Time of interview: Date of Interview:	Location of Interview:
--	------------------------

We are undertaking some research for the Living Places Partnership to find out what you think about access to cultural facilities and activities in your area. When I say culture, I mean museums, libraries, archives, arts and creative activities, sports and heritage.

When answering, please consider your local area to be the area within 15-20 minutes walking distance from your home.

Cards with geographic areas to be provided to fieldworkers.

1. Where do you live?

Postcode

2. Overall, how satisfied or dissatisfied are you with your local area as a place to live?

1 - Very Satisfied	2 - Satisfied	3 - Neither	4 - Dissatisfied	5 - Very Dissatisfied

3. Thinking generally, how important are the following in making somewhere a good place to live?

	1 - Very Important	2 - Important	3 - Neither	4 - Unimportant	5 - Very Unimportant	None Aware of
Historic environment (e.g. old buildings)						
Public open spaces (e.g. town squares)						
Green spaces						
Museums and heritage centres						
Libraries						
Arts facilities (e.g. art centres)						
Arts events (e.g. music and theatrical performances, festivals)						
Sports facilities						
Terraced housing						
Mill buildings						
Cobbled Backstreets						
Canal / Waterways						
Faith Buildings						
Parks						
Victorian Buildings						
Views of the Countryside						
Local shops						
Trees and rivers						
Renovated Buildings						
New Buildings						

4. What amenities, not listed above, are important to you in making somewhere a good place to live?

.....

5. A: Do you engage in these activities?

B: SHOW CARD A – For all responses ask which category they fall into.

Also show Map of Pennine Lancashire showing Blackburn with Darwen and other areas.

	Q5A		Q5B					
	Yes	No	At home	Within the Blackburn with Darwen area	In another part of Pennine Lancashire	Outside Pennine Lancashire area	No, and I don't think this is important	I don't use/visit but I think it is important that the activities are available
Visit Museums and Heritage Centres								
Borrow Books from the Library								
Participate in other activities at the Library								
Participate in arts and other creative activities								
Attend creative, artistic, theatrical or musical events								
Participate in sports activity								
Participate in community / voluntary activities								

6. What would encourage you to *visit/participate* in the following *for the first time/more often*?

Museums local to you

A place of historic interest

.....

Libraries and Archives

Arts Activities

Sports Activities and Centres

7. Which of the following if improved would increase your satisfaction with the local authority area? (please tick all that apply)

Old buildings

Public open spaces (e.g. town squares)

Museums and heritage centres

Libraries

Arts facilities (e.g. art centres)

Arts events (e.g. theatrical performances)

Sports Facilities (e.g. leisure / community centres)

Terraced Housing

Mill Buildings

Cobbled Backstreets

Canal / Waterways

Faith Buildings

Parks

Victorian Buildings

Views of the Countryside

Local shops

Trees and Rivers

Renovated Buildings

New Buildings

8. Within which age bracket are you?

16-24 45-54

25-34 55-64

35-44 Over 65

9. What is your ethnicity?

White

- Mixed
- Asian or Asian British
- Black or Black British
- Chinese
- Other ethnic group

<END OF QUESTIONNAIRE>

CARD A – QUESTION 5B

For each of the activities, which of the category do you fall into?

Yes, I engage in the activities...

1. At home
2. Within the Blackburn with Darwen area
3. In another part of Pennine Lancashire
4. Outside the Pennine Lancashire area

No...

5. I don't think this is important
6. I don't use/visit but I think it is important these activities are available

CARD B – FOR QUESTION 7

Which of the following if improved would increase your satisfaction with the local authority area?

Historic environment (e.g. old buildings)
Public open spaces (e.g. town squares)
Green spaces (e.g. public parks)
Museums and heritage centres
Libraries
Arts facilities (e.g. art centres)
Arts events (e.g. music and theatrical performances, festivals)
Sports facilities
Terraced housing
Old Mill buildings
Cobbled Backstreets
Canal / Waterways
Faith Buildings
Victorian Buildings
Views of the Countryside
Local shops
Trees and rivers
Renovated Buildings
New Buildings

APPENDIX G

FULL PRIMARY RESEARCH FINDINGS

1.0 Overall Findings

1.1 Overall, how satisfied are you with your local area as a place to live?

	Very Satisfied	Satisfied	Neither	Dissatisfied	Very Dissatisfied
All respondents	16.4%	52.4%	11.0%	14.3%	5.7%

1.2 Thinking generally, how important are the following in making somewhere a good place to live?

Factor	Percentage of all Respondents					
	Very Important	Important	Neither	Unimportant	Very Unimportant	None Aware of
Historic environment (e.g. old buildings)	20.3%	44.4%	8.8%	16.7%	9.8%	0.0%
Public open spaces (e.g. town squares)	27.3%	51.0%	6.0%	11.5%	4.3%	0.0%
Green spaces (e.g. public parks)	49.9%	39.9%	5.3%	3.3%	1.7%	0.0%
Museums and heritage centres	16.9%	43.9%	14.3%	15.8%	8.1%	1.0%
Libraries	41.1%	44.0%	6.7%	5.0%	3.1%	0.0%
Arts facilities (e.g. art centres)	11.2%	37.1%	16.5%	22.0%	11.0%	2.2%
Arts events (e.g. music and theatrical performances, festivals)	15.8%	46.8%	13.1%	15.3%	7.4%	1.7%
Sports facilities	43.9%	41.5%	2.9%	6.0%	5.7%	0.0%
Terraced housing	20.8%	36.4%	13.2%	15.3%	13.9%	0.5%
Old Mill buildings	8.8%	31.5%	14.3%	24.6%	19.1%	1.7%
Cobbled Backstreets	7.4%	20.5%	13.1%	28.4%	30.1%	0.5%
Canal / Waterways	13.4%	42.3%	17.9%	9.8%	15.1%	1.4%
Faith Buildings	28.5%	38.6%	10.6%	10.3%	11.8%	0.2%
Victorian Buildings	16.5%	36.2%	15.6%	17.0%	14.1%	0.5%
Views of the Countryside	50.7%	33.9%	11.1%	2.9%	1.4%	0.0%
Local shops	72.5%	25.6%	1.0%	1.0%	0.0%	0.0%
Trees and rivers	44.2%	37.2%	13.1%	4.3%	1.2%	0.0%
Renovated Buildings	35.8%	40.8%	9.8%	9.5%	2.6%	1.4%
New Buildings	32.0%	35.3%	11.0%	15.3%	6.4%	0.0%

1.3 Cultural Consumption

Type of Cultural Engagement	Yes	No
Visit Museums and Heritage Centres	52.4%	47.6%
Borrow Books from the Library	58.9%	41.1%
Participate in Other Activities at the Library	30.2%	69.8%
Participate in Arts and Other Creative Activities	23.1%	76.9%
Attend Creative, Artistic, Theatrical or Musical Events	43.8%	56.2%
Participate in Sports Activity	49.0%	51.0%
Participate in Community / Voluntary Activities	30.2%	69.8%

Type of Cultural Engagement	Where consumed			
	At home	Within their own local authority area	In another part of Pennine Lancashire	Outside Pennine Lancashire area
Visit Museums and Heritage Centres	5%	69%	38%	62%
Borrow Books from the Library	10%	94%	1%	1%
Participate in Other Activities at the Library	9%	93%	1%	1%
Participate in Arts and Other Creative Activities	35%	74%	8%	8%
Attend Creative, Artistic, Theatrical or Musical Events	5%	79%	28%	42%
Participate in Sports Activity	13%	95%	13%	11%
Participate in Community / Voluntary Activities	6%	97%	4%	2%

Type of Cultural Engagement	No, and I don't think this is important	I don't use/visit but I think it is important that the activities are available
Visit Museums and Heritage Centres	26%	75%
Borrow Books from the Library	16%	85%
Participate in Other Activities at the Library	22%	79%
Participate in Arts and Other Creative Activities	36%	64%
Attend Creative, Artistic, Theatrical or Musical Events	25%	77%
Participate in Sports Activity	11%	89%
Participate in Community / Voluntary Activities	24%	75%

1.4 Which of the following if improved would increase your satisfaction with the local authority area?

Factor	% of Respondents
Local shops	37%
Green spaces (e.g. public parks)	29%
Terraced housing	23%
Public open spaces (e.g. town squares)	22%
Historic environment (e.g. old buildings)	21%
Sports facilities	18%
Renovated Buildings	12%
Cobbled Backstreets	12%
Libraries	11%
Trees and rivers	11%
New Buildings	10%
Old Mill buildings	10%
Canal / Waterways	9%
Victorian Buildings	8%
Arts events (e.g. music and theatrical performances, festivals)	8%
Museums and heritage centres	7%
Arts facilities (e.g. art centres)	7%
Views of the Countryside	6%
Faith Buildings	5%

2.0 Findings by Local Authority of Survey

2.1 Overall, how satisfied are you with your local area as a place to live?

	Very Satisfied	Satisfied	Neither	Dissatisfied	Very Dissatisfied
Blackburn with Darwen	13.3%	54.3%	13.3%	13.3%	5.7%
Burnley	13.3%	56.0%	8.0%	16.0%	6.7%
Hyndburn	18.3%	59.8%	7.3%	14.6%	0.0%
Pendle	22.1%	51.9%	6.5%	10.4%	9.1%
Rossendale	16.0%	39.5%	18.5%	17.3%	7.4%
Overall	16.4%	52.4%	11.0%	14.3%	5.7%

2.2 Thinking generally, how important are the following in making somewhere a good place to live?

Factor	Overall	Blackburn with Darwen	Burnley	Hyndburn	Pendle	Rossendale
Local shops	1.30	1.38	1.39	1.18	1.34	1.23
Green spaces (e.g. public parks)	1.67	1.61	1.76	1.67	1.55	1.78
Views of the Countryside	1.70	1.98	1.55	1.90	1.21	1.77
Trees and rivers	1.81	1.91	1.60	1.99	1.39	2.10
Libraries	1.86	1.69	1.79	2.10	1.68	2.08
Sports facilities	1.88	1.57	1.88	2.31	1.86	1.86
Renovated Buildings	2.07	2.02	2.00	1.98	2.14	2.21
Public open spaces (e.g. town squares)	2.15	1.86	2.52	2.10	2.42	1.98
New Buildings	2.29	2.21	2.44	1.88	2.99	2.03
Faith Buildings	2.44	1.66	1.88	3.38	2.23	3.23
Historic environment (e.g. old buildings)	2.51	2.23	2.36	3.41	1.92	2.65
Arts events (e.g. music and theatrical performances, festivals)	2.57	2.13	2.52	3.24	2.23	2.83
Museums and heritage centres	2.57	2.26	2.32	3.27	2.18	2.88
Terraced housing	2.67	2.45	2.59	3.59	2.21	2.51
Canal / Waterways	2.75	2.41	2.24	4.17	1.87	3.04
Victorian Buildings	2.77	2.70	2.16	3.98	1.88	3.05
Arts facilities (e.g. art centres)	2.91	2.29	2.92	3.33	3.05	3.16
Old Mill buildings	3.19	2.79	2.89	4.23	2.81	3.29
Cobbled Backstreets	3.55	3.15	3.48	4.52	2.99	3.68

2.3 Cultural Consumption

	Overall	Blackburn with Darwen	Burnley	Hyndburn	Pendle	Rossendale
Visit Museums and Heritage Centres	53%	53%	63%	41%	60%	47%
Borrow Books from the Library	59%	68%	60%	43%	63%	60%
Participate in Other Activities at the Library	30%	26%	37%	22%	44%	26%
Participate in Arts and Other Creative Activities	23%	23%	24%	22%	25%	22%
Attend Creative, Artistic, Theatrical or Musical Events	44%	32%	52%	37%	57%	47%
Participate in Sports Activity	49%	63%	55%	33%	56%	35%
Participate in Community / Voluntary Activities	30%	30%	36%	24%	28%	35%

**TABLE 9
LOCATION OF CULTURAL CONSUMPTION**

	% of Respondents who consume in each area					
	Overall	Blackburn with Darwen	Burnley	Hyndburn	Pendle	Rossendale
Visit Museums and Heritage Centres						
At home	5%	13%	0%	0%	11%	0%
Within own local authority area	69%	91%	81%	44%	56%	58%
In another part of Pennine Lancashire	38%	43%	28%	35%	51%	32%
Outside Pennine Lancashire area	62%	48%	57%	53%	91%	63%
Borrow Books from the Library						
At home	10%	6%	0%	20%	28%	0%
Within own local authority area	94%	100%	100%	77%	83%	100%
In another part of Pennine Lancashire	1%	1%	0%	3%	0%	0%
Outside Pennine Lancashire area	1%	3%	0%	0%	0%	2%
Participate in Other Activities at the Library						
At home	9%	4%	0%	17%	21%	0%
Within own local authority area	93%	100%	100%	78%	88%	95%
In another part of Pennine Lancashire	1%	0%	0%	6%	0%	0%
Outside Pennine Lancashire area	1%	0%	0%	0%	0%	5%
Participate in Arts and Other Creative Activities						
At home	35%	29%	78%	6%	42%	22%
Within own local authority area	74%	88%	61%	72%	74%	72%
In another part of Pennine Lancashire	8%	17%	0%	22%	0%	0%
Outside Pennine Lancashire area	8%	8%	0%	22%	0%	11%
Attend Creative, Artistic, Theatrical or Musical Events						
At home	5%	15%	3%	3%	5%	3%
Within own local authority area	79%	91.2%	87%	53%	90.7%	66%
In another part of Pennine Lancashire	28%	41%	15%	53%	28%	11%
Outside Pennine Lancashire area	42%	41%	46%	43%	33%	47%
Participate in Sports Activity						
At home	13%	15%	7%	22%	12%	7%
Within own local authority area	95%	98%	95%	81%	93%	100%
In another part of Pennine Lancashire	13%	8%	22%	7%	21%	4%
Outside Pennine Lancashire area	11%	6%	15%	4%	21%	7%
Participate in Community / Voluntary Activities						
At home	6%	3%	0%	15%	10%	7%
Within own local authority area	97%	94%	100%	90%	100%	100%
In another part of Pennine Lancashire	4%	6%	0%	0%	5%	7%
Outside Pennine Lancashire area	2%	6%	0%	0%	0%	0%

**TABLE 10
ATTITUDE TO CULTURE OF NON PARTICIPANTS**

	% of respondents who do not consume					
	Overall	Blackburn with Darwen	Burnley	Hyndburn	Pendle	Rossenda le
Visit Museums and Heritage Centres						
No, and I don't think this is important	26%	20%	11%	15%	47%	39%
I don't use/visit but I think it is important that the activities are available	74%	80%	89%	85%	53%	61%
Borrow Books from the Library						
No, and I don't think this is important	16%	11%	7%	19%	21%	18%
I don't use/visit but I think it is important that the activities are available	84%	89%	93%	81%	79%	82%
Total						
Participate in Other Activities at the Library						
No, and I don't think this is important	21%	23%	9%	17%	27%	30%
I don't use/visit but I think it is important that the activities are available	79%	77%	91%	83%	73%	70%
Participate in Arts and Other Creative Activities						
No, and I don't think this is important	36%	28%	35%	23%	53%	44%
I don't use/visit but I think it is important that the activities are available	64%	72%	65%	77%	47%	56%
Attend Creative, Artistic, Theatrical or Musical Events						
No, and I don't think this is important	24%	15%	19%	10%	37%	49%
I don't use/visit but I think it is important that the activities are available	76%	85%	81%	90%	63%	51%
Participate in Sports Activity						
No, and I don't think this is important	11%	18%	15%	15%	9%	2%
I don't use/visit but I think it is important that the activities are available	89%	82%	85%	85%	91%	98%
Participate in Community / Voluntary Activities						
No, and I don't think this is important	24%	31%	26%	8%	35%	23%
I don't use/visit but I think it is important that the activities are available	76%	69%	74%	92%	65%	77%

2.4 Which of the following if improved would increase your satisfaction with the local authority area?

	Blackburn with Darwen	Burnley	Hyndburn	Pendle	Rossendale	Overall
Local shops	30%	5%	80%	17%	51%	37%
Green spaces (e.g. public parks)	54%	17%	12%	34%	17%	29%
Terraced housing	18%	19%	40%	18%	22%	23%
Public open spaces (e.g. town squares)	30%	11%	33%	22%	11%	22%
Historic environment (e.g. old buildings)	32%	11%	13%	17%	27%	21%
Sports facilities	27%	9%	12%	16%	22%	18%
Renovated Buildings	14%	11%	12%	12%	12%	12%
Cobbled Backstreets	9%	1%	13%	22%	15%	12%
Libraries	21%	9%	4%	12%	9%	11%
Trees and rivers	24%	4%	2%	13%	6%	11%
New Buildings	8%	3%	22%	4%	16%	10%
Old Mill buildings	8%	9%	12%	13%	6%	10%
Canal / Waterways	14%	7%	1%	17%	2%	9%
Victorian Buildings	5%	4%	11%	12%	10%	8%
Arts events (e.g. music and theatrical performances, festivals)	11%	4%	4%	13%	5%	8%
Museums and heritage centres	10%	4%	0%	21%	1%	7%
Arts facilities (e.g. art centres)	13%	4%	1%	14%	1%	7%
Views of the Countryside	14%	3%	4%	8%	1%	6%
Faith Buildings	10%	4%	1%	4%	2%	5%
<i>Average number of factors stated</i>	<i>3.5</i>	<i>1.4</i>	<i>2.8</i>	<i>2.9</i>	<i>2.4</i>	<i>2.7</i>

3.0 Findings by Age Group

3.1 Overall, how satisfied are you with your local area as a place to live?

	Very Satisfied	Satisfied	Neither	Dissatisfied	Very Dissatisfied
16 to 24	10%	43%	16%	20%	10%
25 to 34	19%	44%	10%	20%	7%
35 to 44	15%	60%	15%	7%	3%
45 to 54	14%	58%	10%	15%	3%
55 to 64	21%	55%	7%	15%	3%
65 +	19%	57%	8%	9%	7%

3.2 Thinking generally, how important are the following in making somewhere a good place to live?

Factor	16 to 24	25 to 34	35 to 44	45 to 54	55 to 64	65 +
Local shops	1.29	1.33	1.31	1.27	1.30	1.32
Sports facilities	1.46	1.70	1.80	1.93	2.10	2.30
New Buildings	1.77	2.07	2.23	2.51	2.34	2.76
Green spaces (e.g. public parks)	2.03	1.60	1.68	1.69	1.45	1.61
Views of the Countryside	2.27	1.71	1.87	1.54	1.45	1.40
Libraries	2.27	1.86	1.94	1.85	1.67	1.59
Trees and rivers	2.27	1.80	1.87	1.85	1.56	1.57
Renovated Buildings	2.40	1.99	2.13	1.93	1.90	2.07
Public open spaces (e.g. town squares)	2.41	1.96	2.13	2.14	1.99	2.24
Terraced housing	2.60	2.61	2.92	2.46	2.82	2.57
Arts events (e.g. music, theatrical performances, festivals)	2.70	2.53	2.54	2.58	2.52	2.58
Faith Buildings	2.79	2.27	2.54	2.37	2.33	2.34
Canal / Waterways	2.97	2.77	2.97	2.53	2.71	2.58
Arts facilities (e.g. art centres)	3.03	2.57	2.94	2.93	2.85	3.12
Museums and heritage centres	3.03	2.53	2.69	2.29	2.41	2.47
Historic environment (e.g. old buildings)	3.11	2.53	2.79	2.34	2.14	2.22
Victorian Buildings	3.21	2.89	3.13	2.58	2.62	2.28
Old Mill buildings	3.40	3.06	3.42	3.03	3.32	2.93
Cobbled Backstreets	3.80	3.51	3.63	3.49	3.60	3.31

3.3 Cultural Consumption

	Overall	16 to 24	25 to 34	35 to 44	45 to 54	55 to 64	65 +
Visit Museums and Heritage Centres	52%	33%	54%	61%	58%	59%	50%
Borrow Books from the Library	59%	50%	63%	60%	58%	51%	72%
Participate in Other Activities at the Library	30%	23%	40%	22%	32%	34%	30%
Participate in Arts and Other Creative Activities	23%	24%	33%	15%	24%	23%	20%
Attend Creative, Artistic, Theatrical or Musical Events	44%	30%	40%	36%	53%	56%	49%
Participate in Sports Activity	49%	70%	63%	51%	42%	45%	20%
Participate in Community / Voluntary Activities	30%	23%	30%	22%	27%	38%	39%

TABLE 15
LOCATION OF CULTURAL CONSUMPTION BY AGE GROUP

	% of Respondents in each group who engage						
	Overall	16 to 24	25 to 34	35 to 44	45 to 54	55 to 64	65 +
Visit Museums and Heritage Centres							
At home	-	-	-	-	-	-	-
Within own local authority area	68%	78%	66%	66%	68%	60%	78%
In another part of Pennine Lancashire	38%	35%	45%	32%	35%	37%	43%
Outside Pennine Lancashire area	62%	35%	63%	61%	68%	74%	59%
Borrow Books from the Library							
At home	-	-	-	-	-	-	-
Within own local authority area	93%	100%	91%	100%	94%	97%	83%
In another part of Pennine Lancashire	1%	0%	2%	0%	3%	0%	0%
Outside Pennine Lancashire area	1%	3%	2%	2%	0%	0%	0%
Participate in Other Activities at the Library							
At home	-	-	-	-	-	-	-
Within own local authority area	93%	94%	93%	100%	84%	100%	86%
In another part of Pennine Lancashire	1%	0%	0%	0%	5%	0%	0%
Outside Pennine Lancashire area	1%	6%	0%	0%	0%	0%	0%
Participate in Arts and Other Creative Activities							
At home	35%	18%	30%	45%	36%	41%	47%
Within own local authority area	74%	76%	83%	64%	79%	59%	80%
In another part of Pennine Lancashire	8%	18%	9%	0%	7%	6%	7%
Outside Pennine Lancashire area	8%	12%	4%	9%	7%	12%	7%
Attend Creative, Artistic, Theatrical or Musical Events							
At home	-	-	-	-	-	-	-
Within own local authority area	79%	71%	79%	81%	71%	80%	86%
In another part of Pennine Lancashire	28%	38%	29%	35%	32%	24%	19%
Outside Pennine Lancashire area	42%	67%	36%	54%	39%	37%	33%
Participate in Sports Activity							
At home	13%	14%	16%	8%	12%	15%	7%
Within own local authority area	95%	96%	95%	92%	100%	88%	100%
In another part of Pennine Lancashire	13%	8%	9%	14%	20%	21%	7%
Outside Pennine Lancashire area	11%	8%	5%	16%	16%	15%	7%
Participate in Community / Voluntary Activities							
At home	-	-	-	-	-	-	-
Within own local authority area	97%	94%	95%	94%	100%	100%	97%
In another part of Pennine Lancashire	4%	6%	10%	0%	0%	7%	0%
Outside Pennine Lancashire area	2%	0%	5%	6%	0%	0%	0%

**TABLE 16
ATTITUDE OF NON-PARTICIPANTS BY AGE**

	% of respondents who do not consume by age group						
	Overall	16 to 24	25 to 34	35 to 44	45 to 54	55 to 64	65 +
Visit Museums and Heritage Centres							
No, and I don't think this is important	26%	40%	12%	21%	32%	23%	22%
I don't use/visit but I think it is important that the activities are available	74%	60%	88%	79%	68%	77%	78%
Borrow Books from the Library							
No, and I don't think this is important	16%	29%	11%	14%	24%	6%	9%
I don't use/visit but I think it is important that the activities are available	84%	71%	89%	86%	76%	94%	91%
Participate in Other Activities at the Library							
No, and I don't think this is important	22%	39%	21%	20%	18%	17%	13%
I don't use/visit but I think it is important that the activities are available	78%	61%	79%	80%	82%	83%	87%
Participate in Arts and Other Creative Activities							
No, and I don't think this is important	36%	47%	33%	31%	33%	39%	32%
I don't use/visit but I think it is important that the activities are available	64%	53%	67%	69%	67%	61%	68%
Attend Creative, Artistic, Theatrical or Musical Events							
No, and I don't think this is important	24%	33%	23%	20%	25%	24%	21%
I don't use/visit but I think it is important that the activities are available	76%	67%	77%	80%	75%	76%	79%
Participate in Sports Activity							
No, and I don't think this is important	11%	10%	17%	11%	3%	15%	12%
I don't use/visit but I think it is important that the activities are available	89%	90%	83%	89%	97%	85%	88%
Participate in Community / Voluntary Activities							
No, and I don't think this is important	24%	35%	22%	20%	23%	24%	20%
I don't use/visit but I think it is important that the activities are available	76%	65%	78%	80%	77%	76%	80%

3.4 Which of the following if improved would increase your satisfaction with the local authority area?

	Overall	16 to 24	25 to 34	35 to 44	45 to 54	55 to 64	65 +
Local shops	37%	31%	46%	43%	36%	30%	36%
Green spaces (e.g. public parks)	29%	29%	41%	29%	29%	30%	15%
Terraced housing	23%	20%	17%	29%	25%	26%	23%
Public open spaces (e.g. town squares)	22%	17%	26%	21%	24%	29%	18%
Historic environment (e.g. old buildings)	21%	17%	21%	26%	22%	18%	22%
Sports facilities	18%	33%	26%	19%	10%	11%	8%
Renovated Buildings	12%	3%	13%	14%	14%	19%	12%
Cobbled Backstreets	12%	6%	14%	11%	5%	16%	18%
Libraries	11%	3%	14%	17%	10%	12%	12%
Trees and rivers	11%	9%	20%	10%	8%	5%	12%
New Buildings	10%	20%	17%	8%	10%	5%	3%
Old Mill buildings	10%	3%	6%	4%	17%	12%	16%
Canal / Waterways	9%	4%	11%	7%	10%	10%	9%
Victorian Buildings	8%	1%	4%	6%	15%	8%	15%
Arts events (e.g. music and theatrical performances, festivals)	8%	7%	6%	15%	5%	8%	4%
Museums and heritage centres	7%	3%	6%	10%	8%	11%	5%
Arts facilities (e.g. art centres)	7%	6%	11%	7%	8%	8%	3%
Views of the Countryside	6%	6%	7%	7%	8%	5%	5%
Faith Buildings	5%	7%	4%	1%	7%	5%	4%

4.0 Findings by Ethnicity

The sample sizes recorded only allow for the analysis of findings by white and Asian or Asian British ethnic group.

4.1 Overall, how satisfied are you with your local area as a place to live?

	Very Satisfied	Satisfied	Neither	Dissatisfied	Very Dissatisfied
White	16%	55%	11%	13%	6%
Asian or Asian British	19%	50%	10%	19%	3%

4.2 Thinking generally, how important are the following in making somewhere a good place to live?

	White	Asian or Asian British
Local shops	1.30	1.28
Sports facilities	1.98	1.58
Green spaces (e.g. public parks)	1.65	1.70
Libraries	1.84	1.78
New Buildings	2.41	1.79
Faith Buildings	2.58	1.83
Public open spaces (e.g. town squares)	2.18	1.91
Renovated Buildings	2.06	2.00
Trees and rivers	1.73	2.10
Arts events (e.g. music/theatrical performances, festivals)	2.60	2.24
Views of the Countryside	1.56	2.24
Arts facilities (e.g. art centres)	3.02	2.27
Historic environment (e.g. old buildings)	2.52	2.40
Museums and heritage centres	2.57	2.43
Terraced housing	2.66	2.55
Canal / Waterways	2.74	2.69
Old Mill buildings	3.20	3.01
Victorian Buildings	2.68	3.05
Cobbled Backstreets	3.57	3.44

4.3 Cultural Consumption

	Overall	White	Asian or Asian British
Visit Museums and Heritage Centres	52%	54%	49%
Borrow Books from the Library	59%	56%	75%
Participate in Other Activities at the Library	31%	31%	31%
Participate in Arts and Other Creative Activities	23%	23%	26%
Attend Creative, Artistic, Theatrical or Musical Events	44%	50%	25%
Participate in Sports Activity	49%	44%	65%
Participate in Community / Voluntary Activities	31%	29%	36%

**TABLE 21
LOCATION OF CULTURAL CONSUMPTION BY ETHNIC GROUP**

	% of Respondents in each ethnic group who engage		
	Overall	White	Asian or Asian British
Visit Museums and Heritage Centres			
At home	-	-	-
Within own local authority area	69%	63%	95%
In another part of Pennine Lancashire	38%	37%	38%
Outside Pennine Lancashire area	62%	68%	36%
Borrow Books from the Library			
At home	-	-	-
Within own local authority area	93%	92%	100%
In another part of Pennine Lancashire	1%	1%	0%
Outside Pennine Lancashire area	1%	2%	0%
Participate in Other Activities at the Library			
At home	-	-	-
Within own local authority area	93%	91%	100%
In another part of Pennine Lancashire	1%	1%	0%
Outside Pennine Lancashire area	1%	1%	0%
Participate in Arts and Other Creative Activities			
At home	35%	40%	19%
Within own local authority area	74%	71%	86%
In another part of Pennine Lancashire	8%	8%	10%
Outside Pennine Lancashire area	8%	11%	0%
Attend Creative, Artistic, Theatrical or Musical Events			
At home	-	-	-
Within own local authority area	79%	78%	80%
In another part of Pennine Lancashire	28%	30%	20%
Outside Pennine Lancashire area	42%	44%	25%
Participate in Sports Activity			
At home	13%	15%	6%
Within own local authority area	95%	94%	98%
In another part of Pennine Lancashire	13%	17%	4%
Outside Pennine Lancashire area	11%	14%	4%
Participate in Community / Voluntary Activities			
At home	-	-	-
Within own local authority area	97%	98%	93%
In another part of Pennine Lancashire	4%	4%	3%
Outside Pennine Lancashire area	2%	2%	0%

TABLE 22			
ATTITUDE OF NON-PARTICIPANTS BY ETHNIC GROUP			
	% of respondents who do not consume by ethnic group		
	Overall	White	Asian or Asian British
Visit Museums and Heritage Centres			
No, and I don't think this is important	26%	23%	34%
I don't use/visit but I think it is important that the activities are available	74%	77%	66%
Borrow Books from the Library			
No, and I don't think this is important	43%	67%	10%
I don't use/visit but I think it is important that the activities are available	57%	33%	90%
Participate in Other Activities at the Library			
No, and I don't think this is important	21%	20%	24%
I don't use/visit but I think it is important that the activities are available	79%	80%	76%
Participate in Arts and Other Creative Activities			
No, and I don't think this is important	36%	37%	29%
I don't use/visit but I think it is important that the activities are available	64%	63%	71%
Attend Creative, Artistic, Theatrical or Musical Events			
No, and I don't think this is important	24%	22%	24%
I don't use/visit but I think it is important that the activities are available	76%	78%	76%
Participate in Sports Activity			
No, and I don't think this is important	11%	11%	14%
I don't use/visit but I think it is important that the activities are available	89%	89%	86%
Participate in Community / Voluntary Activities			
No, and I don't think this is important	24%	24%	23%
I don't use/visit but I think it is important that the activities are available	76%	76%	77%

4.4 Which of the following if improved would increase your satisfaction with the local authority area?

	Overall	White	Asian or Asian British
Local shops	37%	42%	20%
Green spaces (e.g. public parks)	29%	25%	44%
Public open spaces (e.g. town squares)	22%	20%	33%
Historic environment (e.g. old buildings)	21%	19%	34%
Sports facilities	18%	16%	23%
Terraced housing	16%	12%	38%
Faith Buildings	16%	12%	38%
Victorian Buildings	16%	12%	38%
Renovated Buildings	12%	13%	11%
Cobbled Backstreets	12%	13%	6%
Libraries	11%	10%	20%
Trees and rivers	11%	9%	18%
New Buildings	10%	10%	11%
Old Mill buildings	10%	11%	4%
Canal / Waterways	8%	8%	10%
Arts events (e.g. music and theatrical performances, festivals)	8%	8%	8%
Museums and heritage centres	7%	7%	8%
Arts facilities (e.g. art centres)	7%	6%	13%
Views of the Countryside	6%	6%	11%

5.0 Post Code Analysis of Respondents

Respondents were asked to state their postcodes. The table below shows the number of respondents by postcode area.

Postcode Area	Number of Responses
BB1	64
BB2	34
BB3	4
BB4	10
BB5	82
BB6	1
BB8	64
BB9	14
BB10	40
BB11	22
BB12	9
BB18	2
OL12	7
OL13	64